



# Climate Change and Vermont

**Dr. Alan K. Betts**

Vermont Academy of Science and Engineering  
(VASE)

Atmospheric Research, Pittsford, VT 05763

[akbetts@aol.com](mailto:akbetts@aol.com)

<http://alanbetts.com>

*CCV Winooski*

***March 8, 2011***



# Climate Change

- **One of the great challenges for 21<sup>st</sup> C**
- **We are already decades late in taking action**
  - *Sawyer (1972): Man-made CO<sub>2</sub> and the “greenhouse” effect*
- *Global issue & local issue;  
societal & personal issue*
- Clash of Earth science & social values

# Outline

- **Science of climate change**

- *Global scale: actual and future*
- *Local scale: Vermont*

## *Questions*

- **The Transition we face**

- *Managing Earth system: technical solutions*
- *Choices, challenges and self-deception*
- *What do we need to do?*

## *Discussion*

My background:

# Peterhouse Cambridge

- Peterhouse, Cambridge: founded 1284
- *Medieval warm period; Vinland colony flourishes*



# My background:

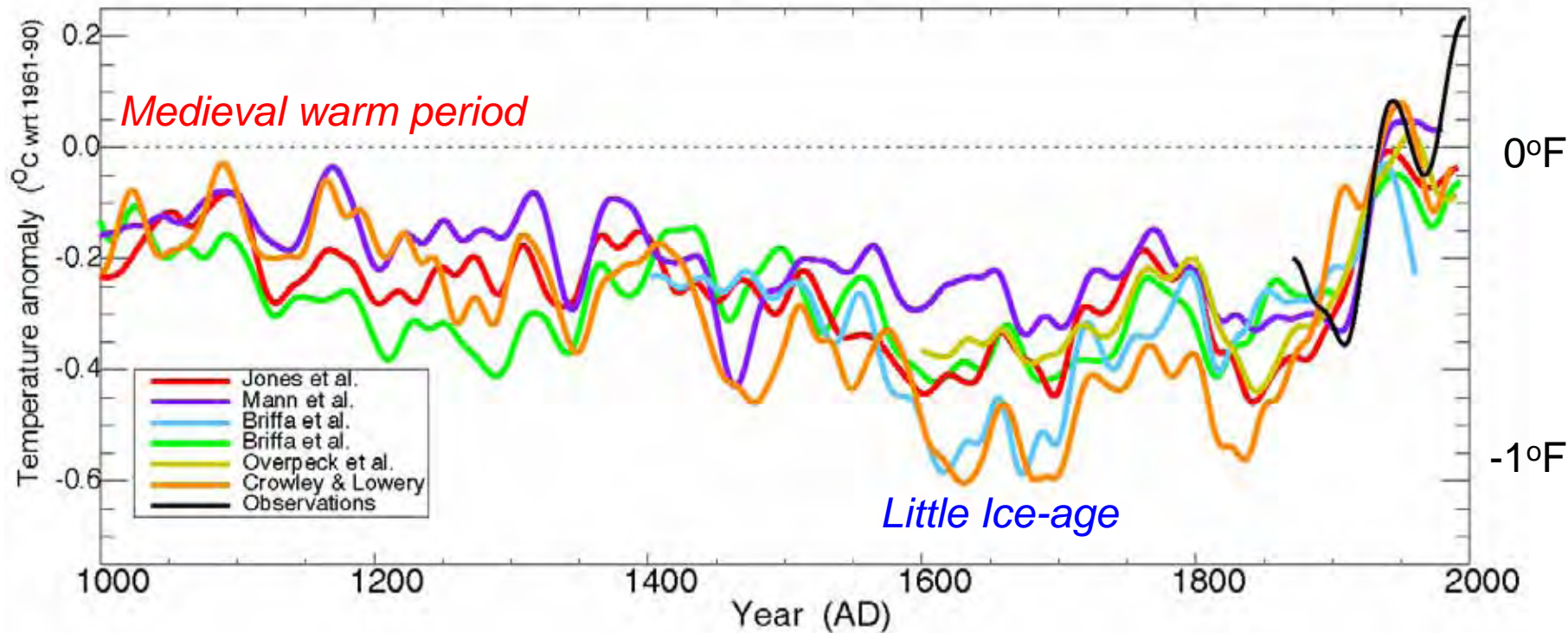
## Nottingham High School

- Founded 1513
- *1550 heading into 'little ice-age'*
- *1620 Pilgrim fathers face bitter winters*



# Millennial Temperature Record

2100: +5°F  
↑

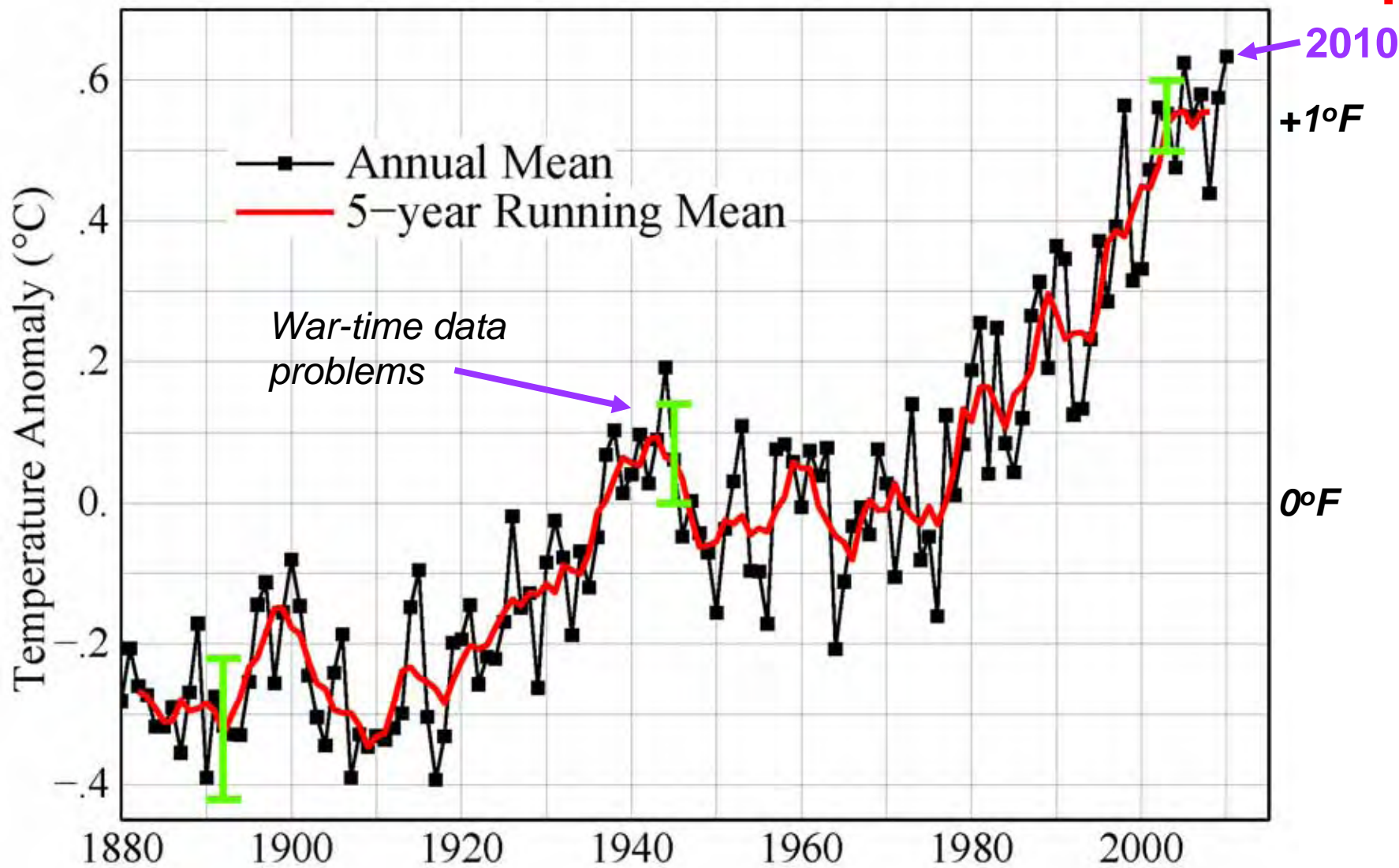


- Before thermometers  
‘proxy’ records have large uncertainty

# Global temperature rise 1880-present

2100: +5°F

## Global Land–Ocean Temperature Index



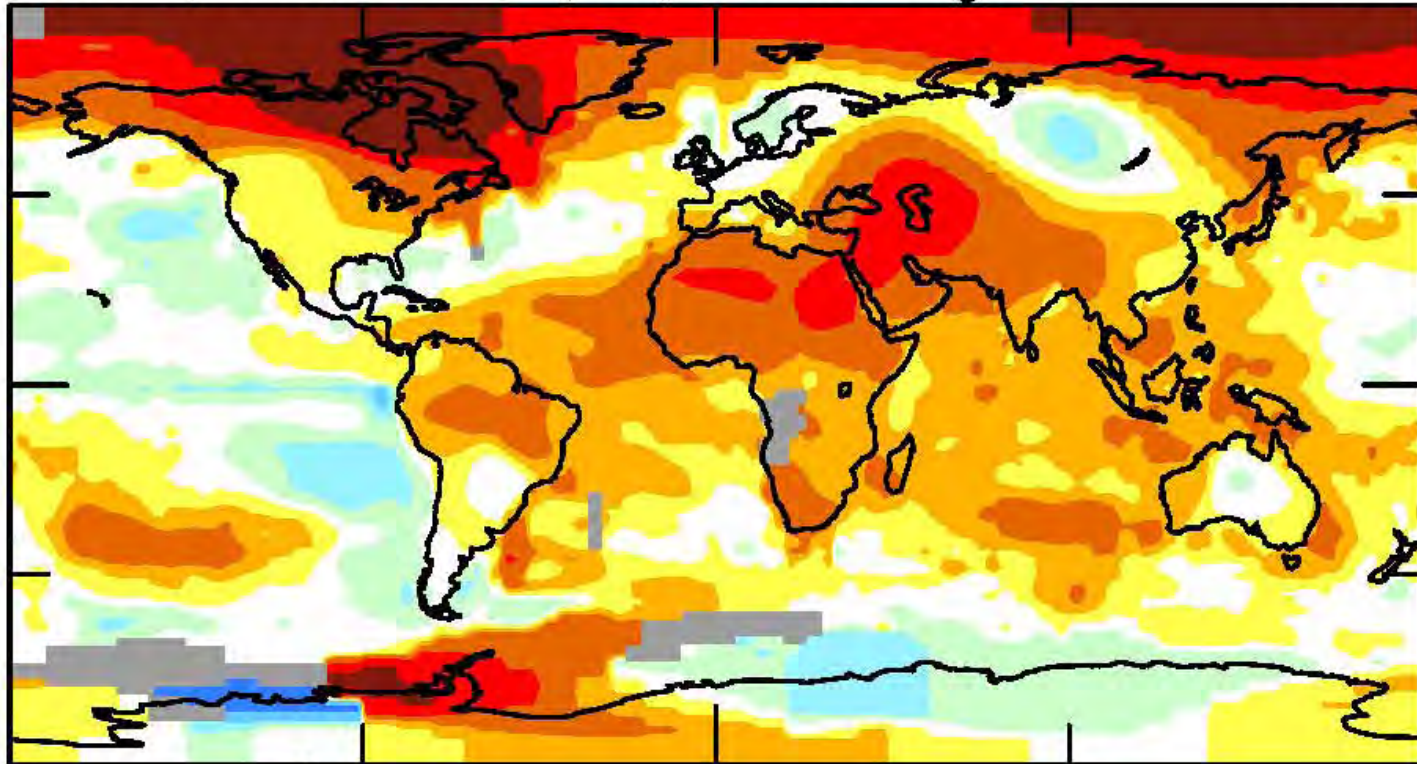
NASA-GISS, 2011



# Global picture 2010

2010, warmest (tie) of 131 years

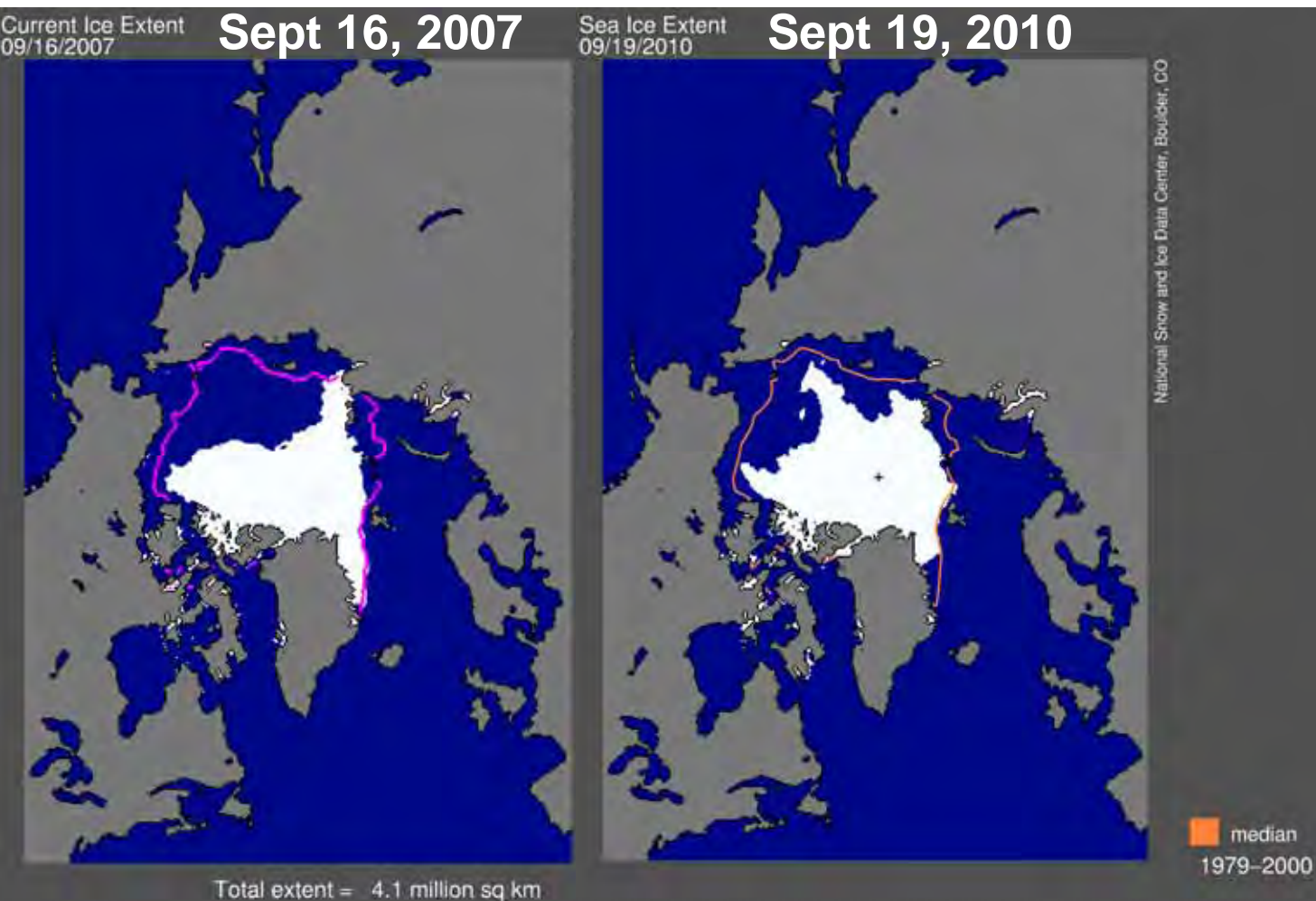
0.63 °C(1.2F)



-5.1 -3.5 -2 -1 -.6 -.2 .2 .6 1 2 3.5 4.3 °C

- *Record summer temps in Russia (100F) (Moscow fires); and Pakistan (128F) & extreme monsoon floods*

# Arctic sea-ice loss has accelerated



*Feedbacks -  
speed melting*

*-less ice, less  
sunlight reflected*

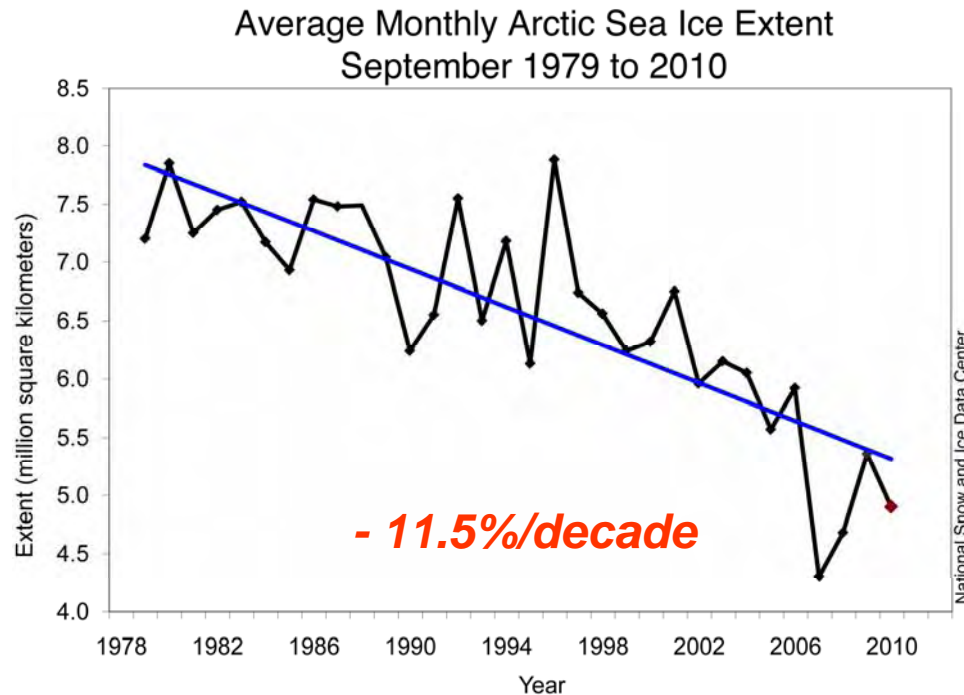
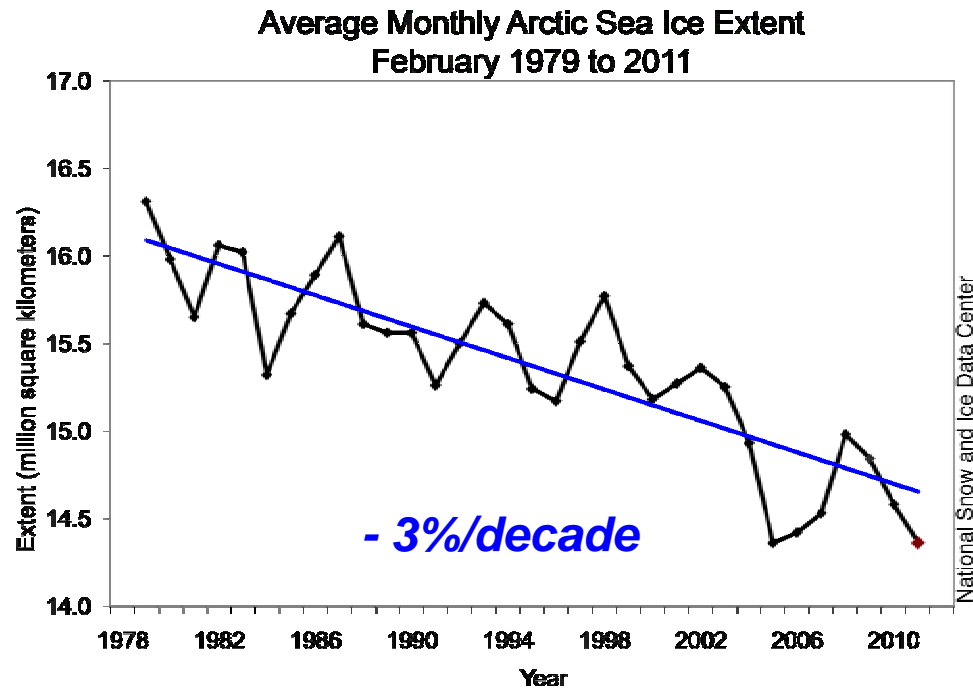
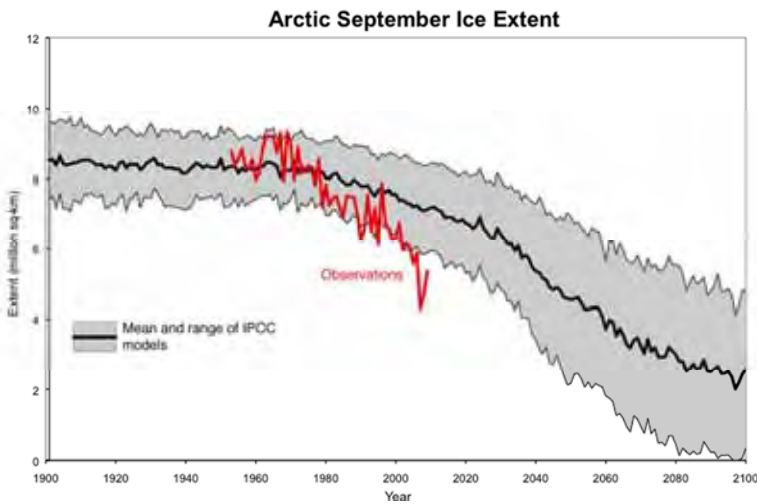
*-more evaporation,  
larger water vapor  
greenhouse*

([www.nsidc.org](http://www.nsidc.org))

- 2007 saw record ice-loss: most ice now only 1-2yrs old
- Open water in October contributes to warmer Fall

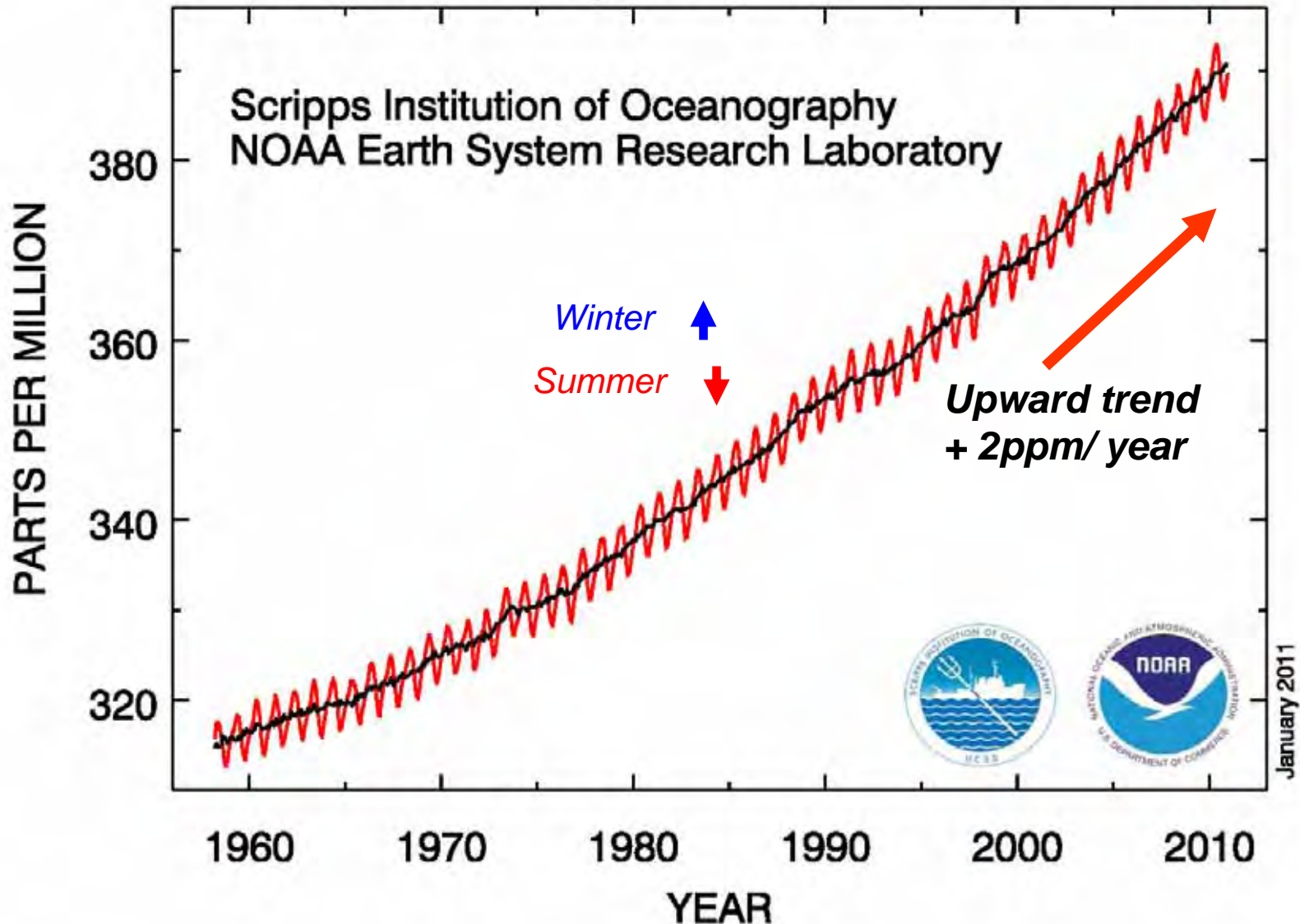
# Sea-ice trends

**Observed Sept decline  
appears to be faster than  
IPCC AR4 climate model  
projections**

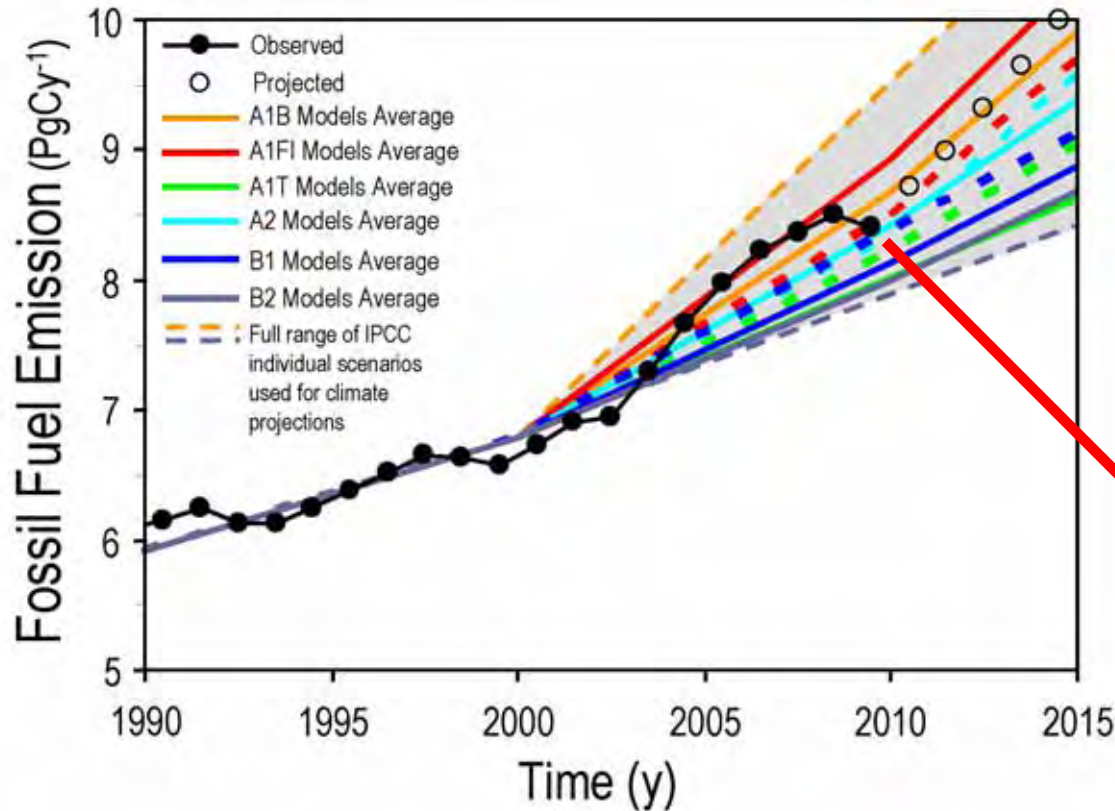


# Carbon dioxide is increasing

## Atmospheric CO<sub>2</sub> at Mauna Loa Observatory



# Fossil Fuel Emissions: Actual vs. IPCC Scenarios



- 4%/year

Need 80% drop by 2050



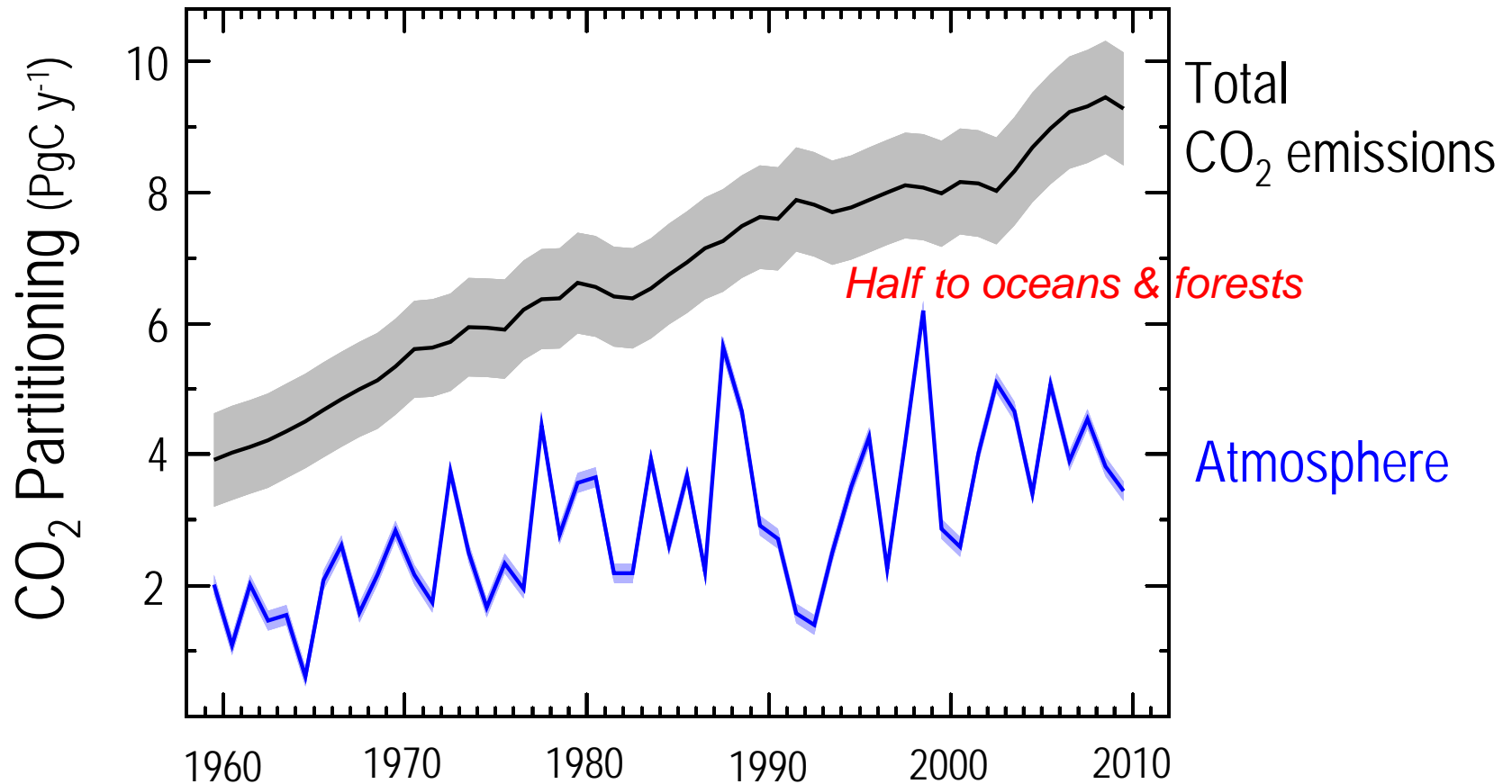
Updated from Raupach et al. 2007, PNAS; Data: Gregg Marland, Thomas Boden-CDIAC 2010; International Monetary Fund 2010



- 2009 was 'good' for the Earth

# Key Diagnostic of the Carbon Cycle

Evolution of the fraction of total emissions that remain in the atmosphere



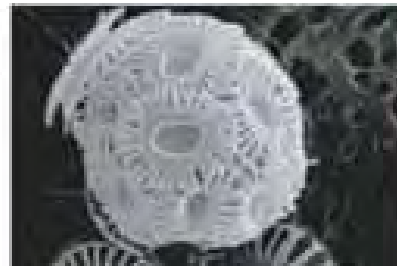
*It takes a century or more to remove CO<sub>2</sub> from atmos., and many centuries from the oceans*

# Rising ocean acidity threatens organisms

- From the tropics to the Arctic, the seas are sucking up emissions of carbon dioxide —from fossil-fuel burning.
- When carbon dioxide dissolves in water, carbonic acid is produced, so the oceans are becoming more acidic.



*[Ruttiman, Nature, 31 Aug., 2006]*



# *Why is rise of atmospheric CO<sub>2</sub> a problem?*

- Atmosphere is transparent to 'light' from sun but not to 'infrared' radiation from earth
- Greenhouse gases: H<sub>2</sub>O, CO<sub>2</sub>, CH<sub>4</sub>, ...
  - trap the earth's heat, giving pleasant climate
- **CO<sub>2</sub> rise alone has a small effect, BUT**
- As Earth warms, evaporation and water vapor increase and this **amplifies warming** a lot
- As Earth warms, snow and ice decrease and this **amplifies warming** in winter and northern high lats, because less sunlight is reflected
- **Doubling CO<sub>2</sub> will warm Earth about 5F (3C)**
  - much more in the north and over land



# *IPCC, Feb 2, 2007*

## **Global Warming is *unequivocal***

Since 1970, rise in:

- Global surface temperatures
- Lower atmosphere temperatures
- Global sea-surface temperatures
- Global sea level
- Ocean heat content
- Water vapor
- Rainfall intensity
- Extratropical precipitation
- Hurricane intensity
- Drought
- Extreme high temperatures
- Heat waves

Decrease in:

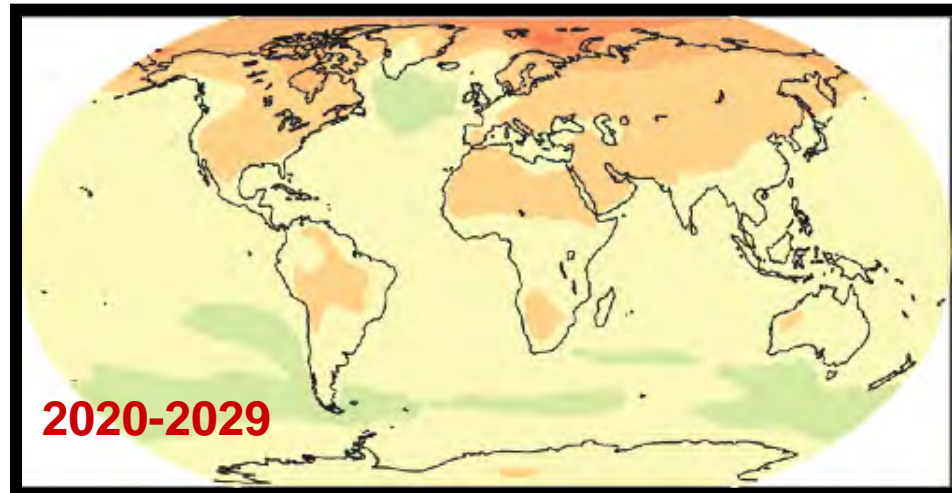
- NH Snow extent
- Arctic sea ice
- Glaciers
- Ocean pH [increasing acidity]

[\[www.ipcc.ch\]](http://www.ipcc.ch)



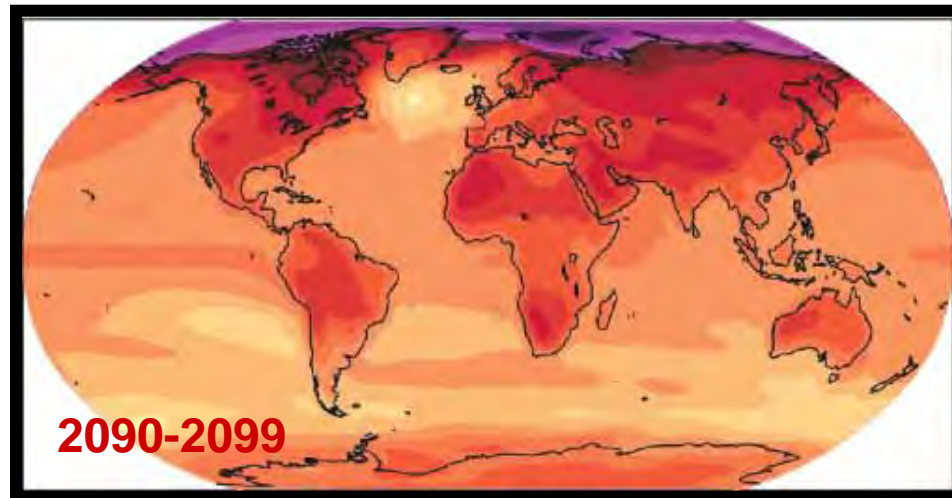
# Multi-model Predicted Percent Change in Temperature (2020-2029 and 2090-2090 relative to 1980-1999) [°C]

**'Committed'**



**(We did nothing for the last 20 years)**

**Still up to us!**



**(We could halve this if we act now)**



**[°C]**

# Sea-level rise will eventually flood coastal cities

- Late 20thC sea-level rise 1ft/century
- 21stC -likely to triple to 3-4 ft/century
- And continue at this rate for centuries
- Unless we drastically reduce burning of fossil fuels by 80 % by 2050
- *Sea-level rise will get our attention  
– but too late!*

# And much more..

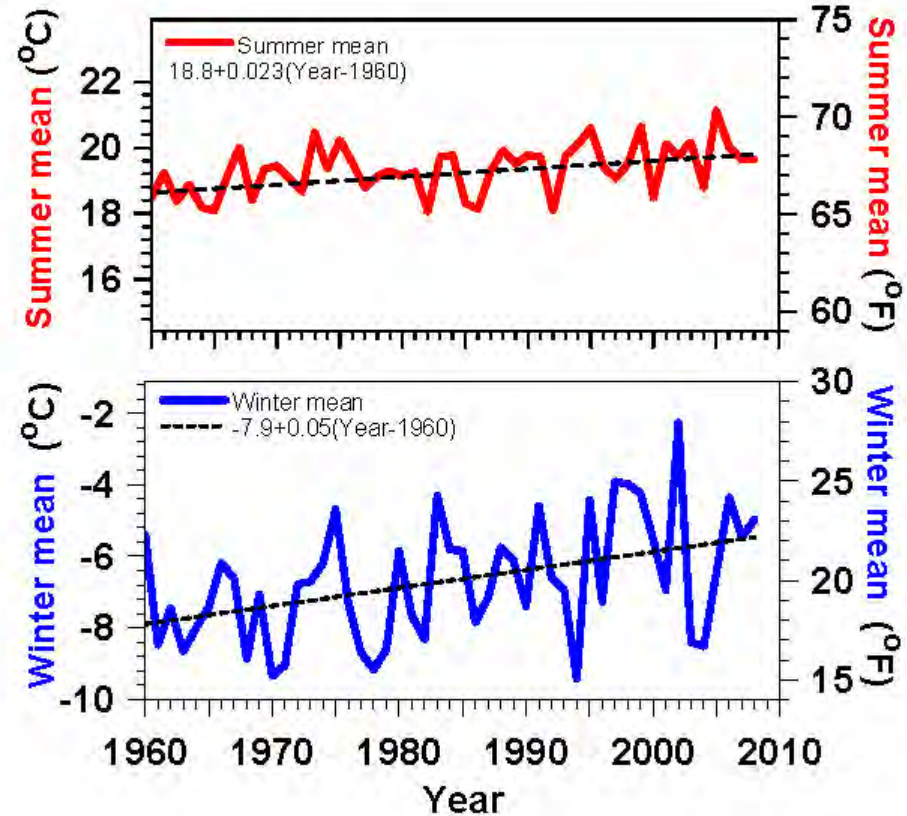
- Melting Arctic and permafrost – methane release?
- Extreme weather: floods, fires & drought
- Collapse of many ecosystems, including perhaps forest and ocean ecosystems
- Collapse of unsustainable human population

# What is happening to Vermont?

- Local climate change indicators
- Easier to grasp than global view
  
- *Warming twice as fast in winter than summer*
- *Winter severity decreasing*
- ***Lakes frozen less by 7 days/decade***
- ***Growing season longer 3.7 days/decade***
- ***Spring earlier by 2-3 days per decade***

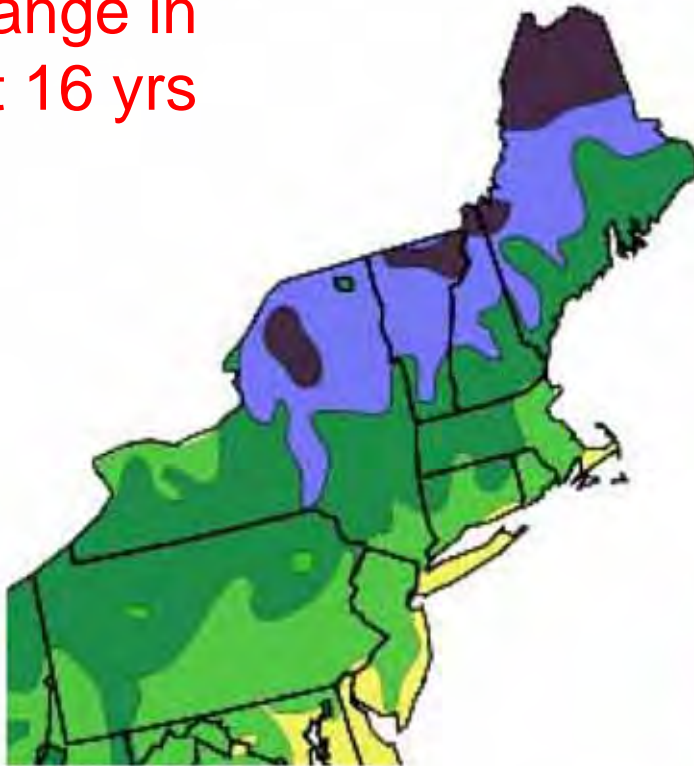
# Vermont temperature trends

- summer +0.4F/decade
- winter +0.9F/decade
- Less snow drives larger winter warming

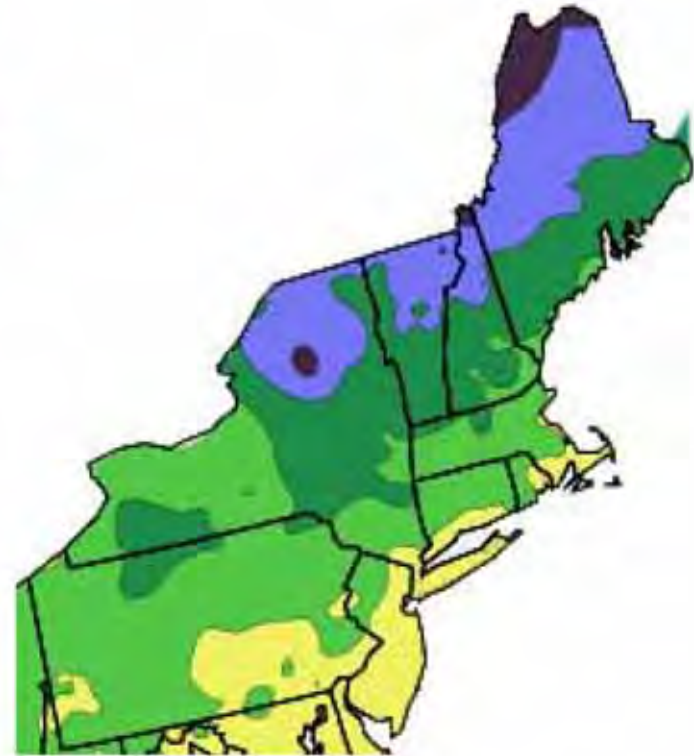


# USDA Hardiness Zones - Northeast

Change in  
last 16 yrs



1990



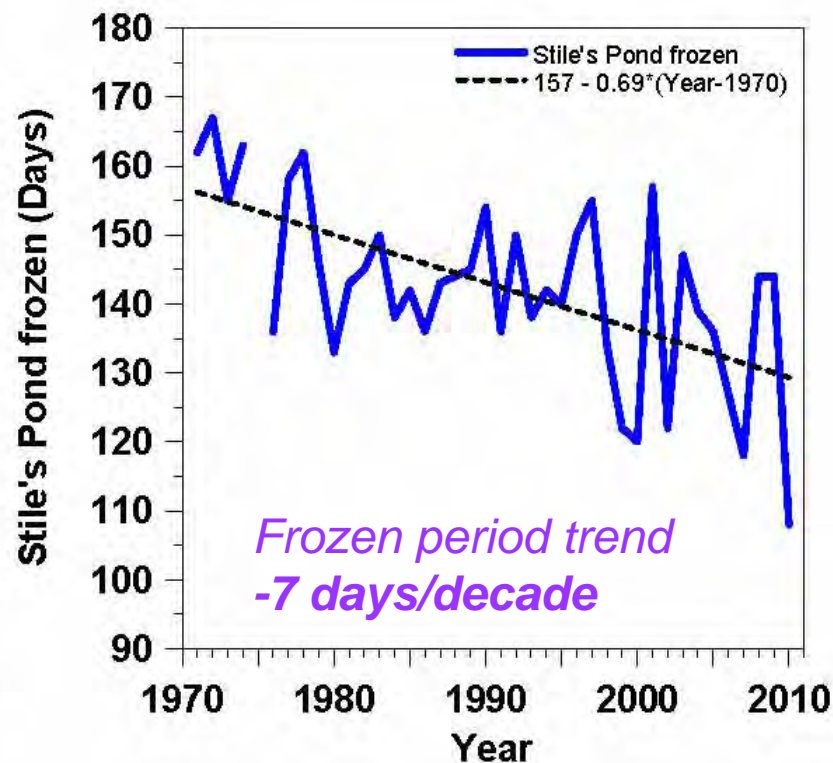
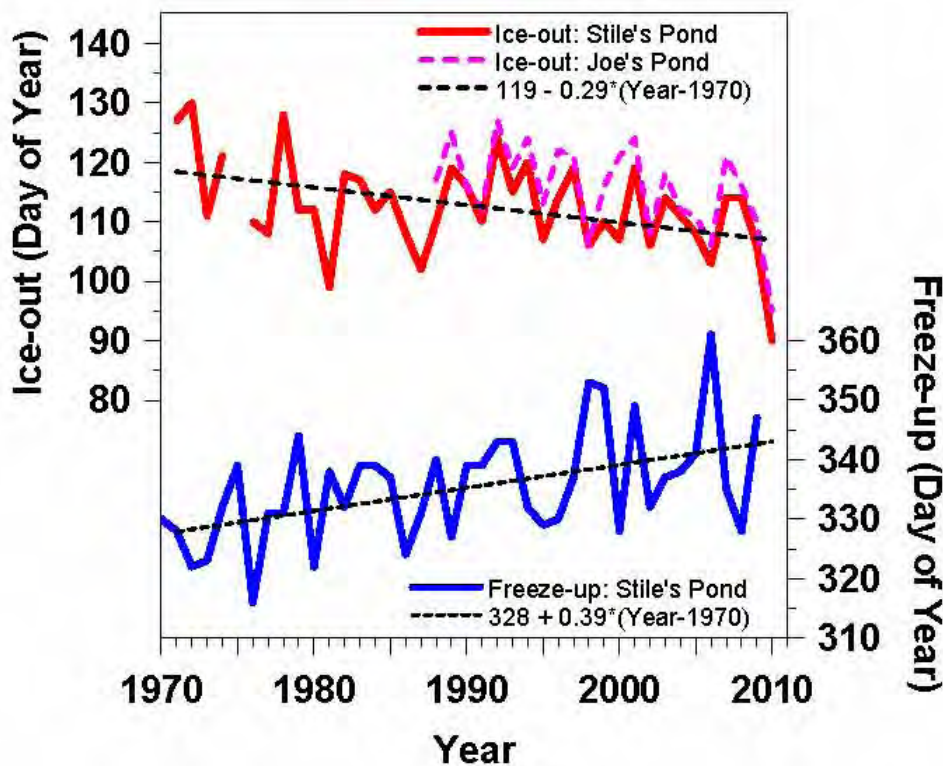
2006



USDA Hardiness Zones

# Lake freeze-up & Ice-out changing

– *frozen period shrinking fast*



- *Ice-out earlier 3 days/decade*
- *Freeze-up later 4 days/decade*



# Gardening in Pittsford, VT in January



Jan 7, 2007

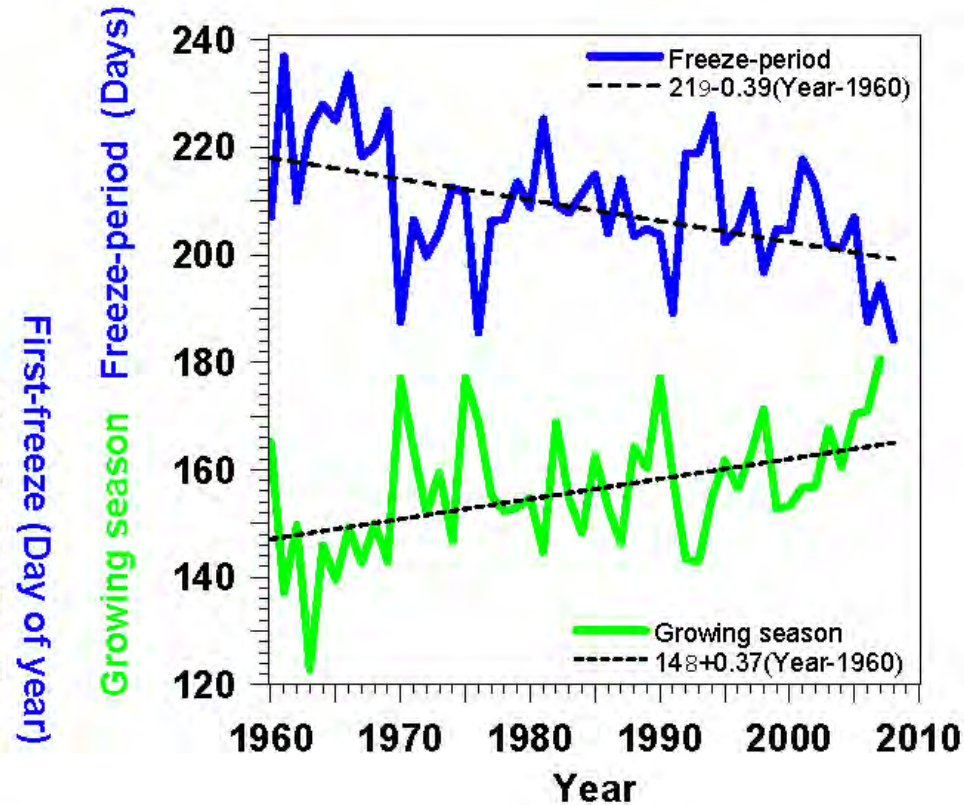
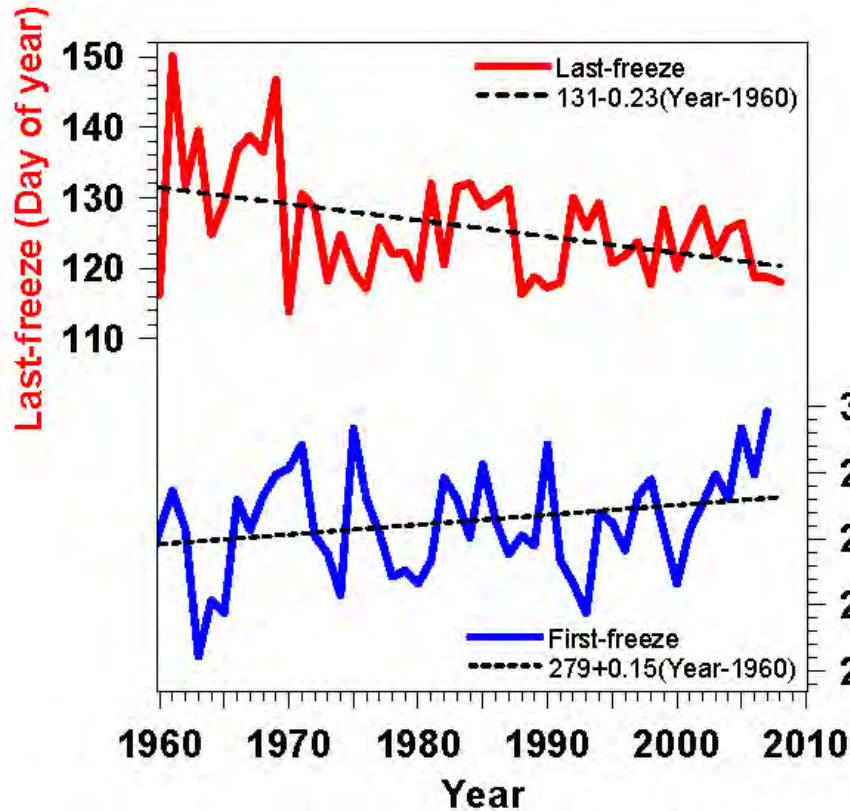
December, 2006, *warmest on record*  
[since 1894]



Jan 10, 2008

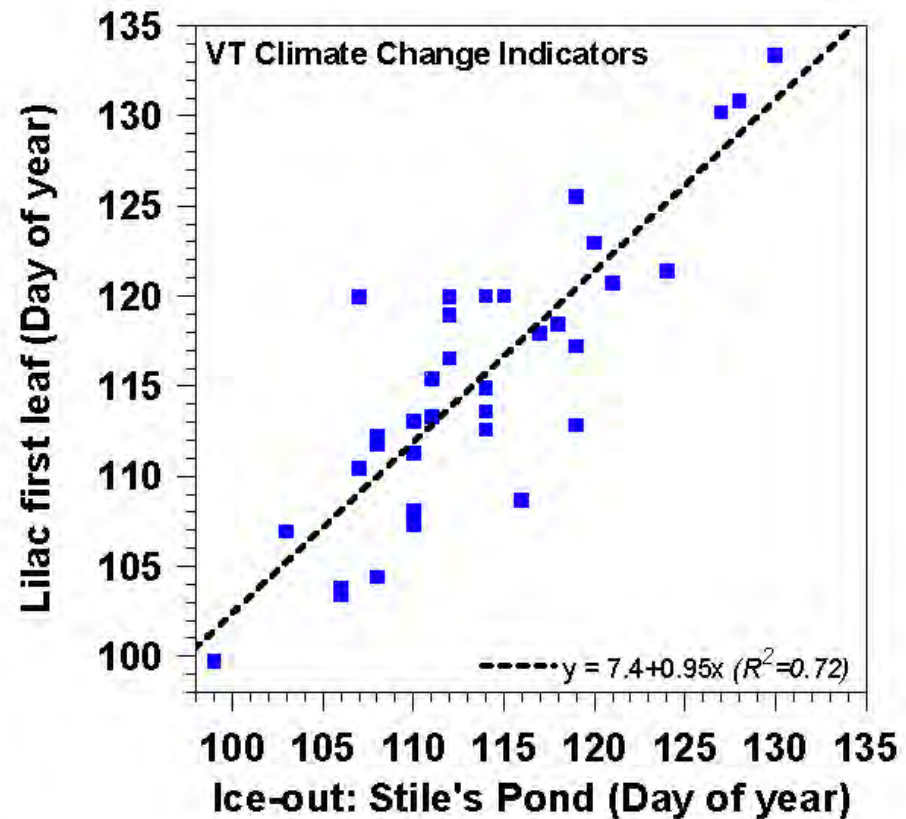
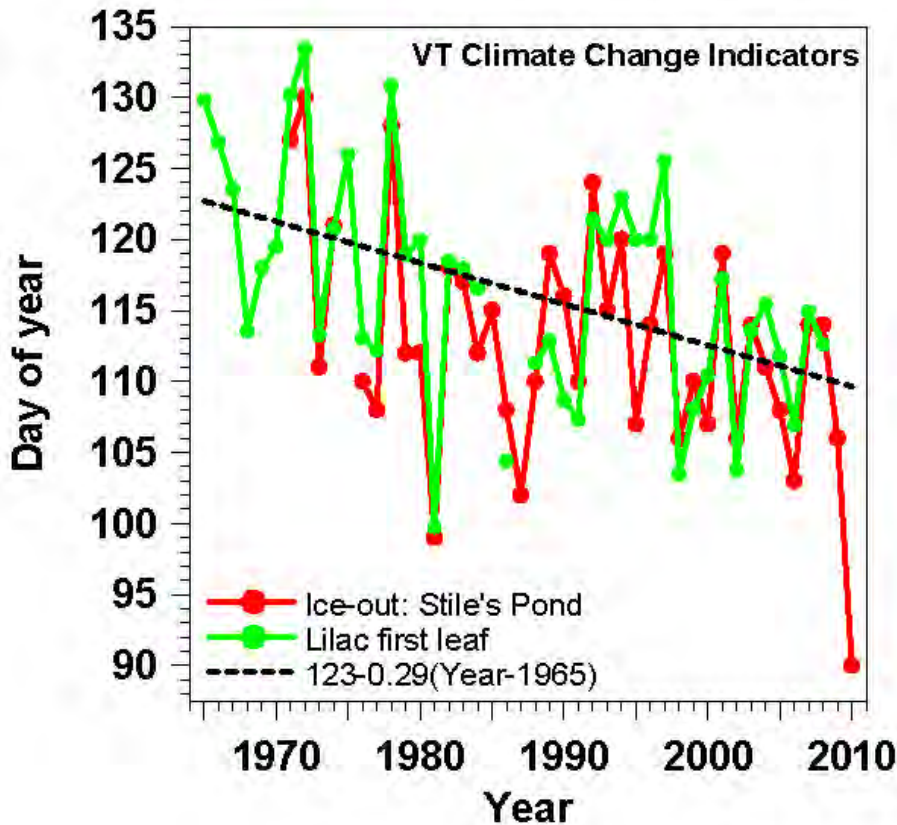
Warm Fall, *record Arctic sea-ice melt*  
Snow cover in December, ground unfrozen

# First & last frosts changing



- ***Growing season for frost sensitive plants increasing 3.7 days/decade***

# Lilac leaf-out and Ice-out coupled



- ***Lilac leaf and lake ice-out depend on same Feb. Mar. and April temperatures***

# Vermont winter, 2006



- Sun is low; and snow reflects sunlight, except where trees!
- Sunlight reflected, stays colder; little evaporation, clear sky

# Spring climate transitions



- **After melt but before leaf-out**

Little evaporation → Dry atmosphere, low RH  
→ Sunny days  
→ Cools at night  
→ Large diurnal temp. range  
giving warm days, cool nights and frost

*Low water vapor  
greenhouse*

- **After leaf-out**

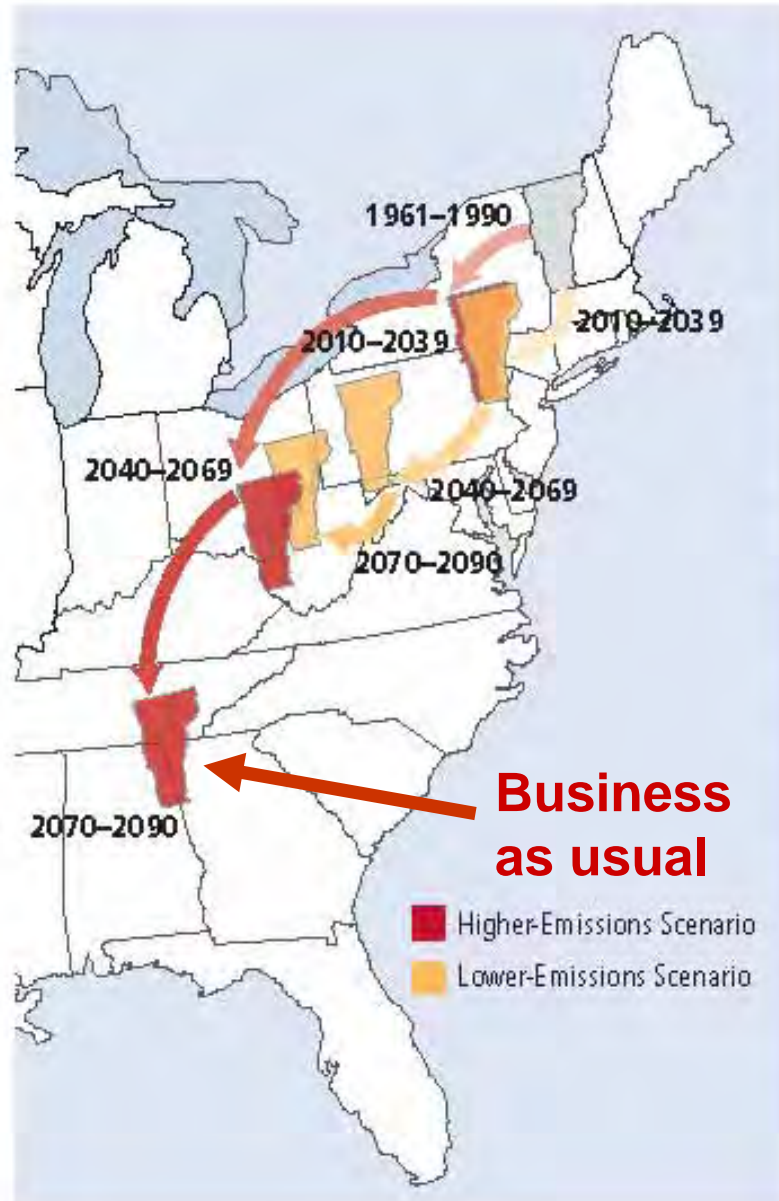
Large evaporation → Wet atmosphere, low cloud-base  
→ cooler days  
→ Warmer nights  
→ Reduced chance of frost

*Big water vapor  
greenhouse*

# Vermont's future with **high** and **low** GHG emissions

*What about Skiing?*

*What about tropics?*



## Migrating State Climate

Changes in average summer heat index—a measure of how hot it actually feels, given temperature and humidity—could strongly affect quality of life in the future for residents of Vermont. Red arrows track what summers in Vermont could feel like over the course of the century under the higher-emissions scenario. Yellow arrows track what summers in the state could feel like under the lower-emissions scenario.

NECIA, 2007

# Outline

- **Science of climate change**
  - *Global scale: actual and future*
  - *Local scale: Vermont*

## **Questions**

- **The Transition we face**
  - *Managing Earth system: technical solutions*
  - *Choices, challenges and self-deception*
  - *What do we need to do?*

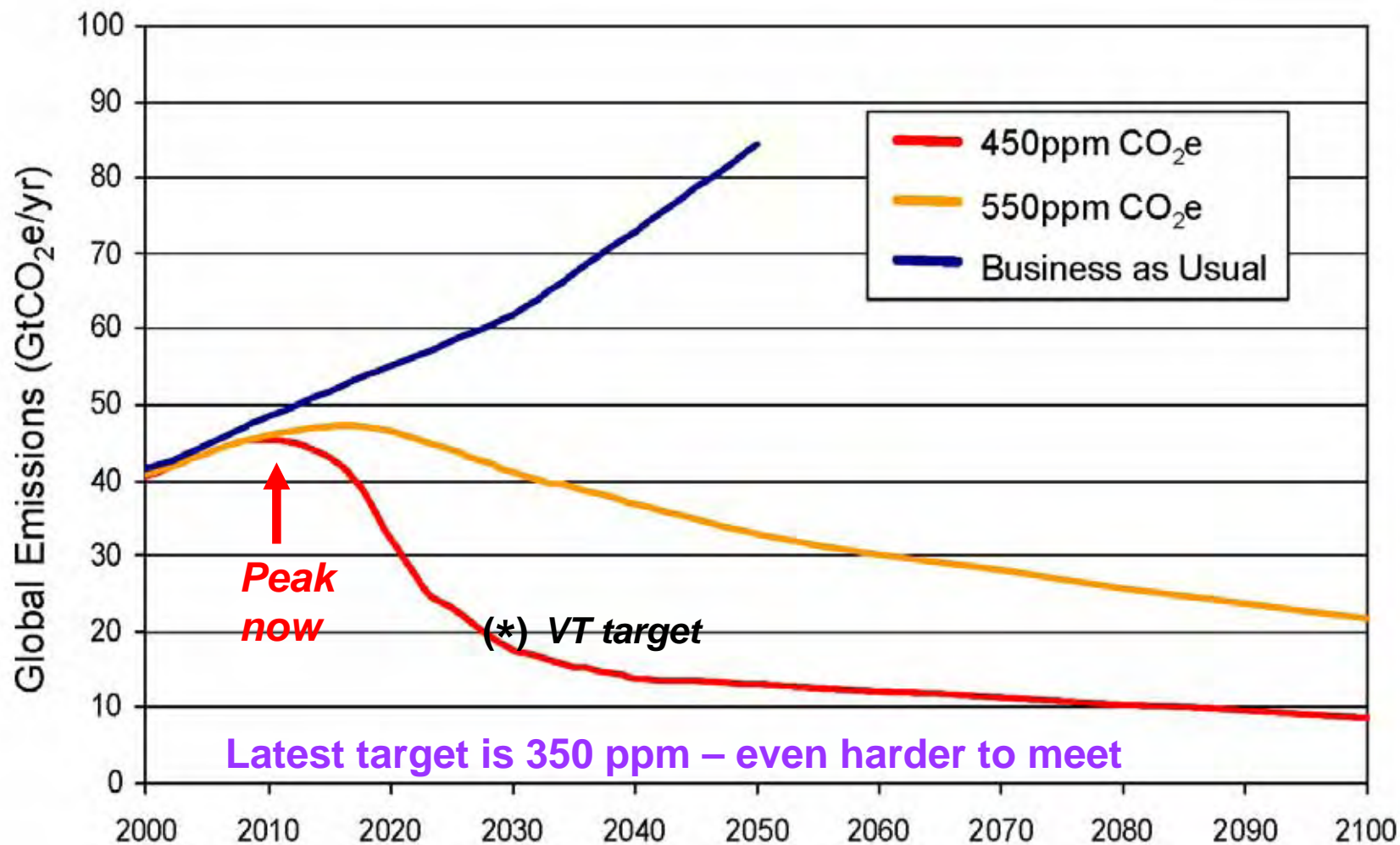
# Can we stop dangerous climate change?

- Yes – Quickly stabilize atmospheric CO<sub>2</sub>
- This means 80% drop in CO<sub>2</sub> emissions!
- *This is difficult because fossil fuels have driven our industrial growth and population growth for 200 years and our 'lifestyle' has become dependent on fossil fuel*



# How do we avoid 'Dangerous Climate Change'?

## Emissions Paths to Stabilisation [Stern, 2006]



# How do we manage the Earth?

*(When there is so much we don't know)*

- *Need a long time horizon: generational to century*
- **We need some new rules/guidelines!**
  - our numbers are so great
  - our industrial impact is too large
  - maximizing profit as guiding rule has failed us
- *Relocalize to regain control/responsibility and minimize transport*

# Three broad guide-lines or ‘rules’

## *Minimize impacts*

- **Minimize lifetime of human waste in the Earth system and eliminate waste with critical biosphere interactions**
- **Minimize the use of non-renewable raw materials; maximize recycling and remanufacturing**
- **Maximize the efficiency with which our society uses energy and fresh water, and maximize the use of renewable resources.**

# Efficiency comes first

- **Need to double or triple our energy efficiency because..**
- **Cannot replace current fossil fuel use with biofuels & renewable energy**
- **Oil and gas reserves are limited, but coal & oil-shale reserves are sufficient to push CO<sub>2</sub> to 1000ppm [*and in time melt ice-caps*]. Can we “sequester” CO<sub>2</sub> [put it back in the earth]?**

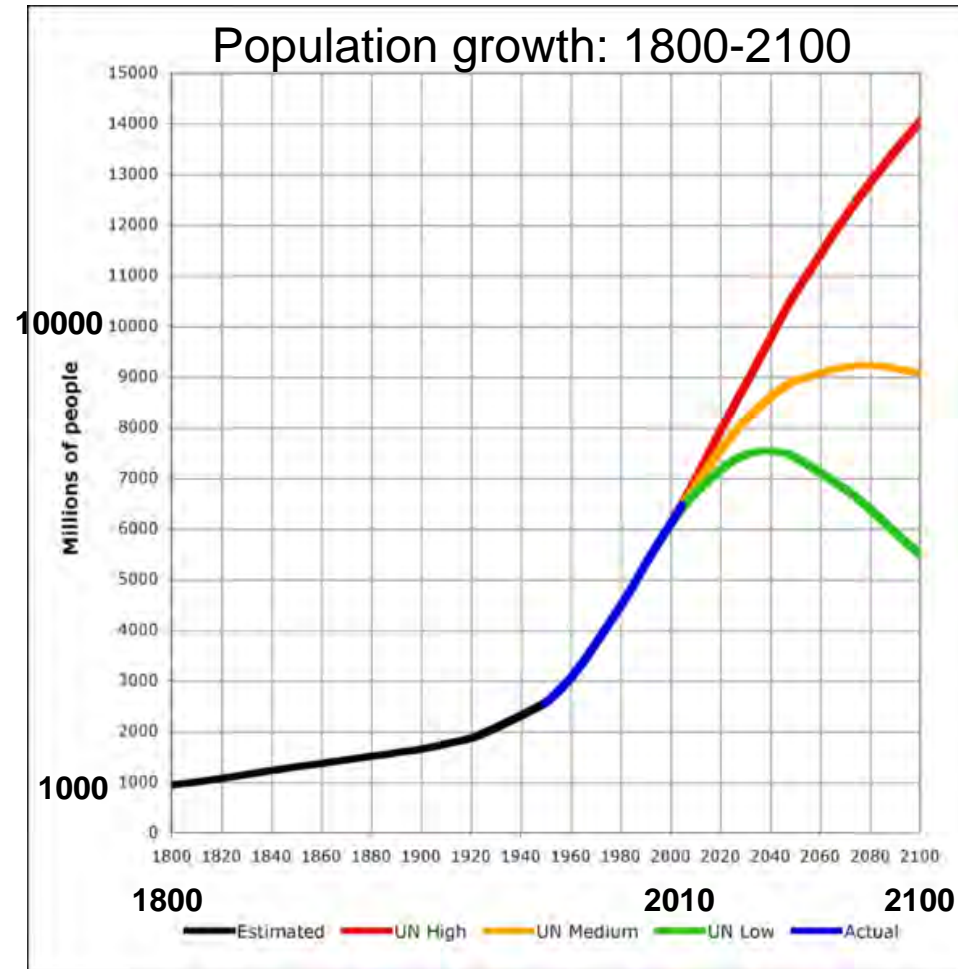
# Why is it difficult for us?

- *Three pillars of American dream are crumbling*
- “Economic growth” based on **fossil fuels, debt and consumerism** is **unsustainable**
  - and a disaster for the planet!
- **Individual “rights”** & needs of humanity must be balanced against the needs of the **earth’s ecosystem**
- **We have no workable paradigm to guide and manage technology** – so result is tremendous successes and catastrophic failures

# We passed the carrying capacity of the Earth in the 1980s



- **The problem with “Growth”**
- **Population is still rising**
- **Consumption is still rising**
- **Fossil fuel use is still rising**
- *We still ‘believe’ in Growth*
- *Global poverty & suffering are still growing: the future looks bleak for billions*
- *In a finite world, growth leads to overshoot & collapse*



# But if Growth can't save us, surely Technology can?

- *We have lost sight of the critical distinction between the human-made world and the natural-world?*
- We understand the human-made world, the world of computers & technology – because we made it – it is *predictable, controllable, except when we are careless.*
- The same is not true of the natural world – which is far more complex and alive. Our understanding is limited; *prediction & control are not possible* *[E. F. Schumacher, 1977]*
- *Now our world of technology is having a global impact on the natural world and it must be heavily managed – but this is incompatible with our ideology.*

# What do we need?

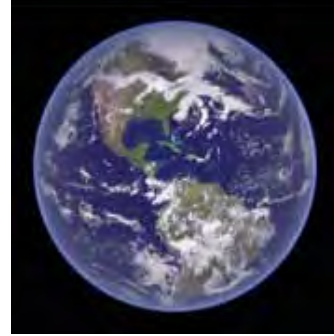
- **So we need honest, truthful, smart pathways forward**
- **That will not frighten people into paralysis**
- **That will spread hope, not anger**
- **That sidestep ideological barriers with new language**
- **That develop adaptive governance**  
*[US constitution gives no rights to the Earth]*
- **That respect Earth system processes & limits**



# Faced with..

- **Over-population, over-consumption, amazing waste, and climate change we have to change direction because**
- **The Earth is unstoppable, though it reacts slowly**
- **Humanity will lose unless we smarten up and minimize our impacts on the Earth system**
- **We have no choice - so reconnect with the Earth - and find the bright side!**

# Our choices are bounded



- *Whether we use technical, social or religious language*
- Humanity is an integral part of the earth system and dependent on its stability
- **We do not have the freedom to do what we wish, whatever our economic or theological doctrine**
- The response of the Earth system to our human-centered arrogance will be sufficiently large this century **that we will rethink our doctrine**
- **We would be wise to rethink sooner rather than later**

# What will this mean for you?

- *Society needs to rethink its relationship to the natural environment and its ecosystems in less than one generation*
- *Our 'lifestyle' is disconnected from what the earth can sustain and the **large inertia** of the earth system is masking the extent of the crisis we face*
- Individual can rethink priorities  
    but **societal changes are needed**: from towns to global
- **Local food; local power; community solutions**
- **We create the future – it is not a given!**
- **Ask: Is this an efficient and sustainable way of doing this?**
- **Do I have a deep understanding and connection to Earth?**

# **The future is not our past**

- **We create the future**
- **Communities are one key**  
[[transitiontowns.org](http://transitiontowns.org)]

# What do we need to do?

- **Plan for transition to a sustainable society**
- Recognize this will take a decade and that it needs a community effort
- *Education in Energy and Climate literacy*
- **Food:** local agriculture & gardens
- **Energy:** Double energy efficiency ....
  - home heating – district heating + cogen
  - renewable electricity mix
  - efficient transportation system
- *Finance: relocalization in real world [Swiss Wir]*

# Media Issues

- Sunday Environment page in Rutland Herald/Barre-Montpelier Times Argus:  
*2008-2011 – see handout: 34 articles*  
<http://alanbetts.com/writings>
- VPR Commentaries: vpr.net    *or*  
<http://alanbetts.com/talks>

# Gadgets can help!



**30 mph Danish electric tricycle**

# ‘Anti-global warming’ tactics

## *[delay, confuse and deny]*

- Fabricate ‘data’ or cherry-pick the science for unsolved issues and ignore the big picture. ‘This disproves global warming’ *or* ‘Science isn’t resolved; we need more science.’
- Models can’t predict the future with certainty, so the models are ‘unreliable’, ‘can’t be trusted’. Given this uncertainty, *we cannot be held responsible for the future.*
- If climate change were real, it would require collective government regulation of the ‘free market’, which we are opposed to; so *climate change must be a ‘hoax/conspiracy’*
- *It is too costly to make structural changes to our society, and it would affect profit margins.*
- [We will wait till China and India take action]
- [The poor in Africa need energy]