



# Vermont's Changing Climate



---

**Dr. Alan K. Betts**

**Atmospheric Research, Pittsford, VT 05763**

**[akbetts@aol.com](mailto:akbetts@aol.com)**  
**<http://alanbetts.com>**

***CCV Winooski, VT***

***February 11, 2013***

# Outline

- **Science of climate change**
  - **Global and local**
  - **What is happening to Vermont?**
  - **Why is extreme weather increasing?**
- **The transition we face**
  - **Can we stabilize the climate?**
  - **Why is it difficult?**

**Discussion**

## Earth sustains life

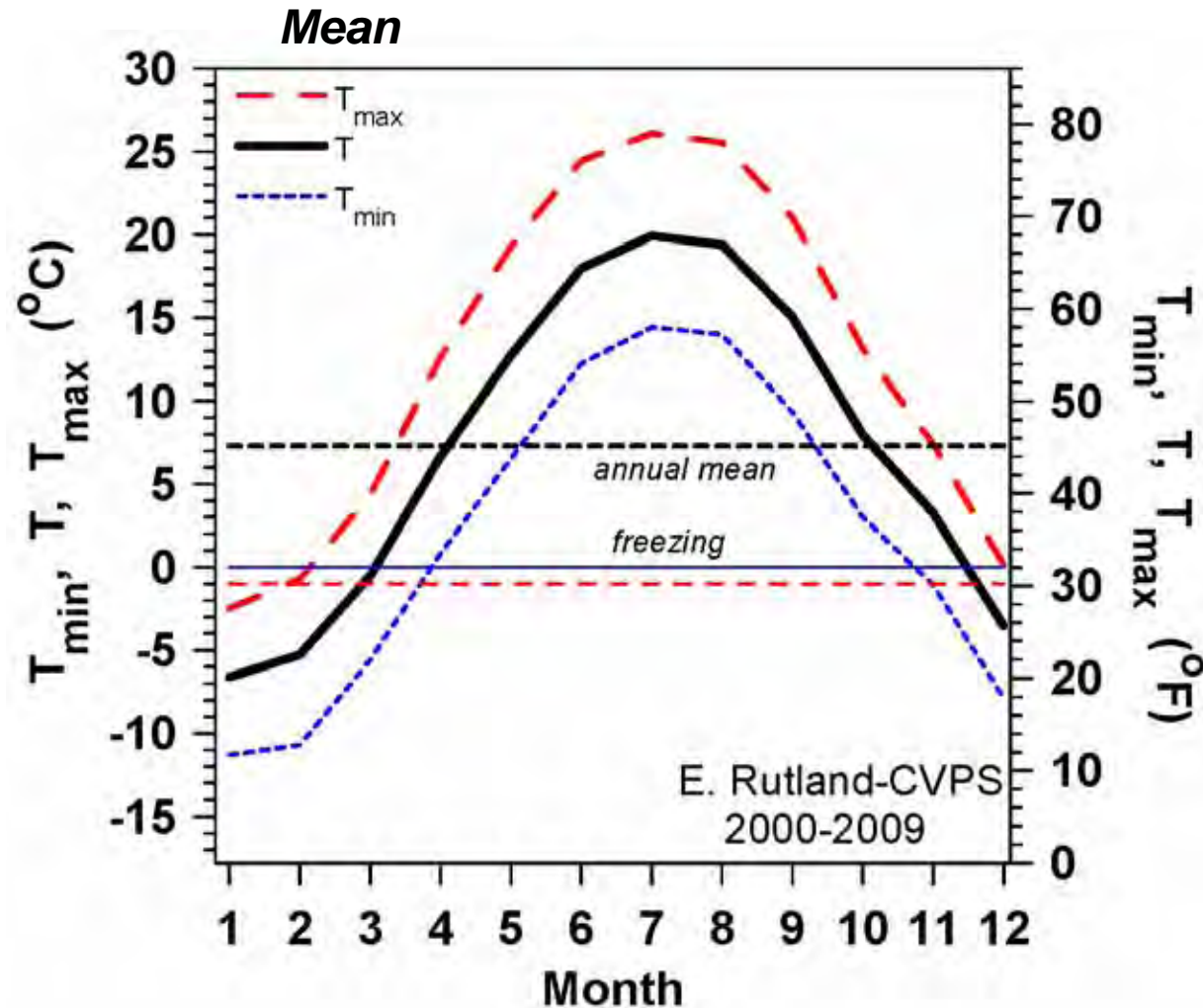
- Burning fossil fuels is increasing greenhouse gases and melting polar ice
- Climate is warming and extreme weather is increasing
- Water plays crucial role everywhere



*January 2, 2012: NASA*

# Climate of Vermont

- Climate is a mean (10-30y)
- $T_{\max}$ ,  $T$ ,  $T_{\min}$
- Large seasonal range in VT
- Freezing T of water critical to climate

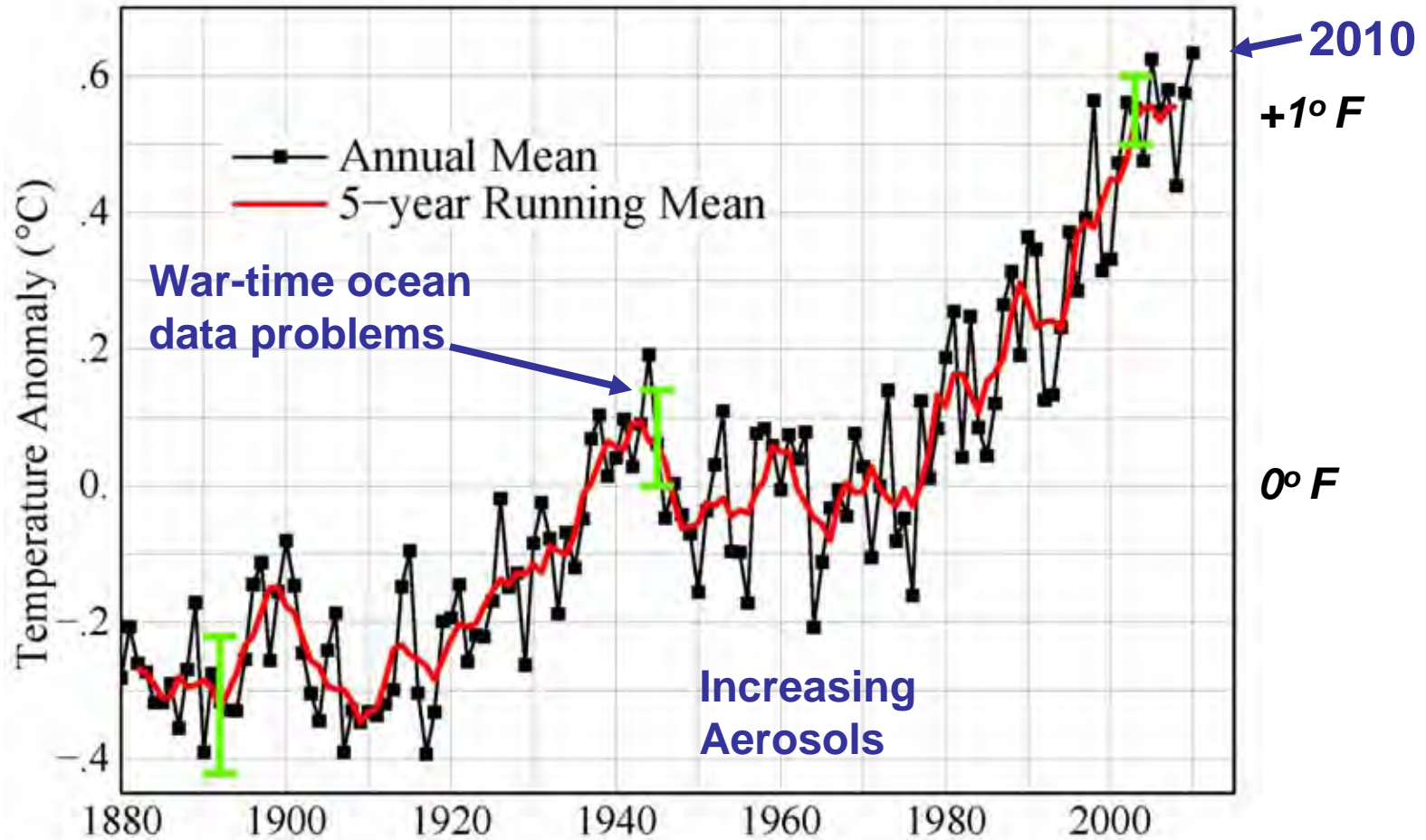


# Global Temperature Rise 1880 – Present

2100: +5°F



Global Land–Ocean Temperature Index

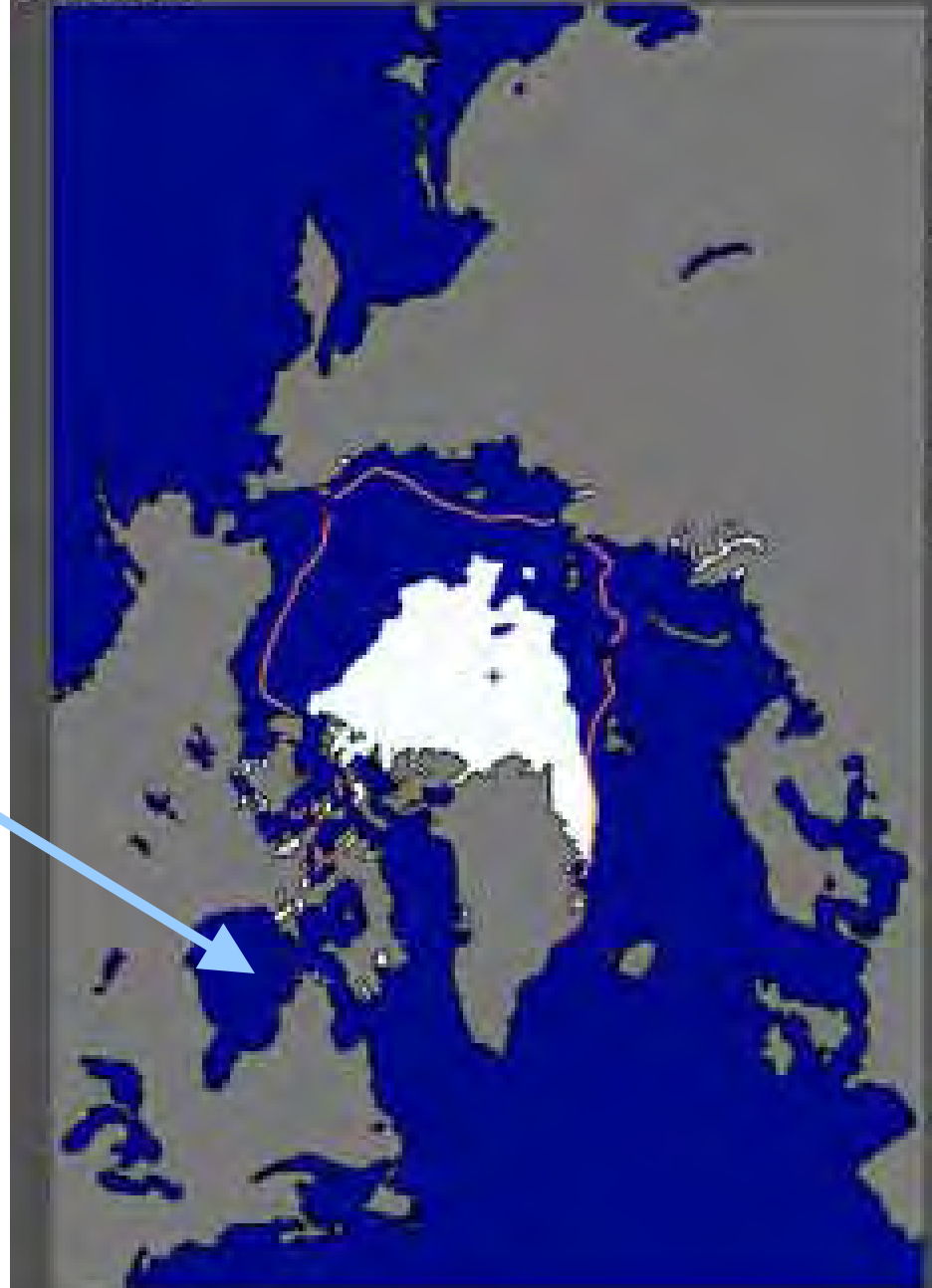


NASA-GISS, 2011

- **Half the Arctic Sea Ice Melted in 2012**
- **Open water in Oct. Nov. gives warmer Fall in Northeast**

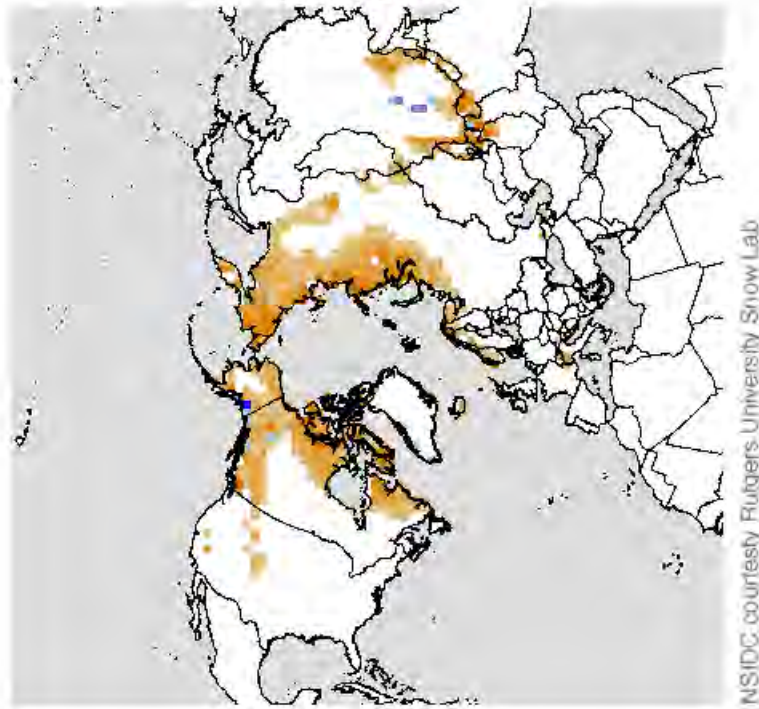
***At the end of Nov. 2011 Hudson Bay was still nearly ice-free***

- **Amplifying feedbacks:**
- ***Less ice, less reflection of sunlight***
- ***More evaporation, larger vapor greenhouse effect***
- ***Ice thin: most 1-yr-old***



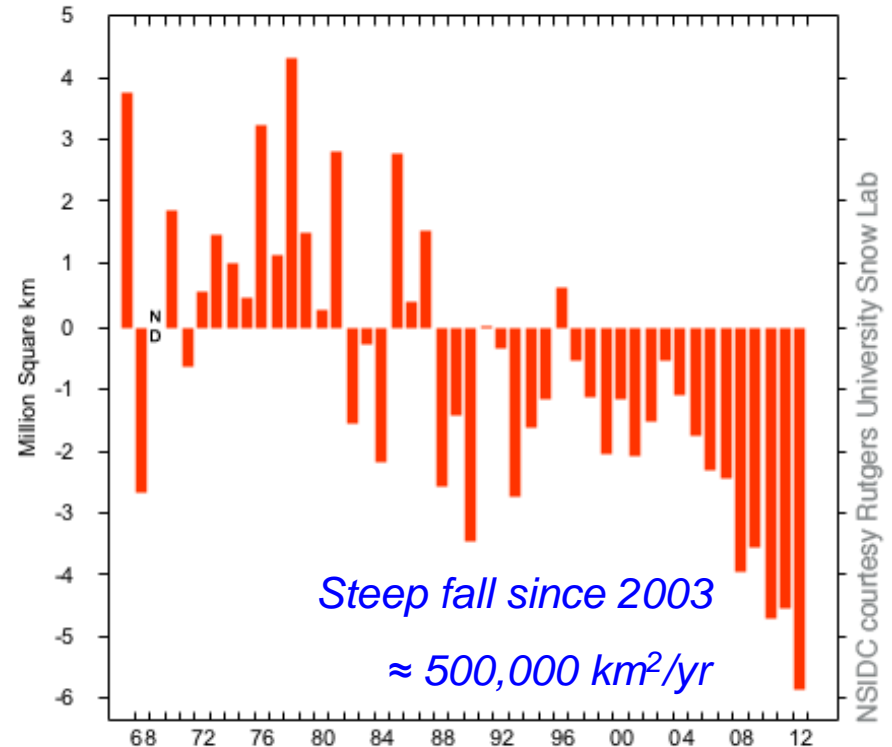
# June 2012 snow cover minimum

Northern Hemisphere Snow Cover Anomaly  
June 2012



Percent difference from 1971 - 2000 average June snow cover extent

Northern Hemisphere Snow Cover Anomaly  
June 1967 - 2012



- Arctic warming rapidly
  - Melting fast
- New England winters also
  - Same amplifying feedbacks

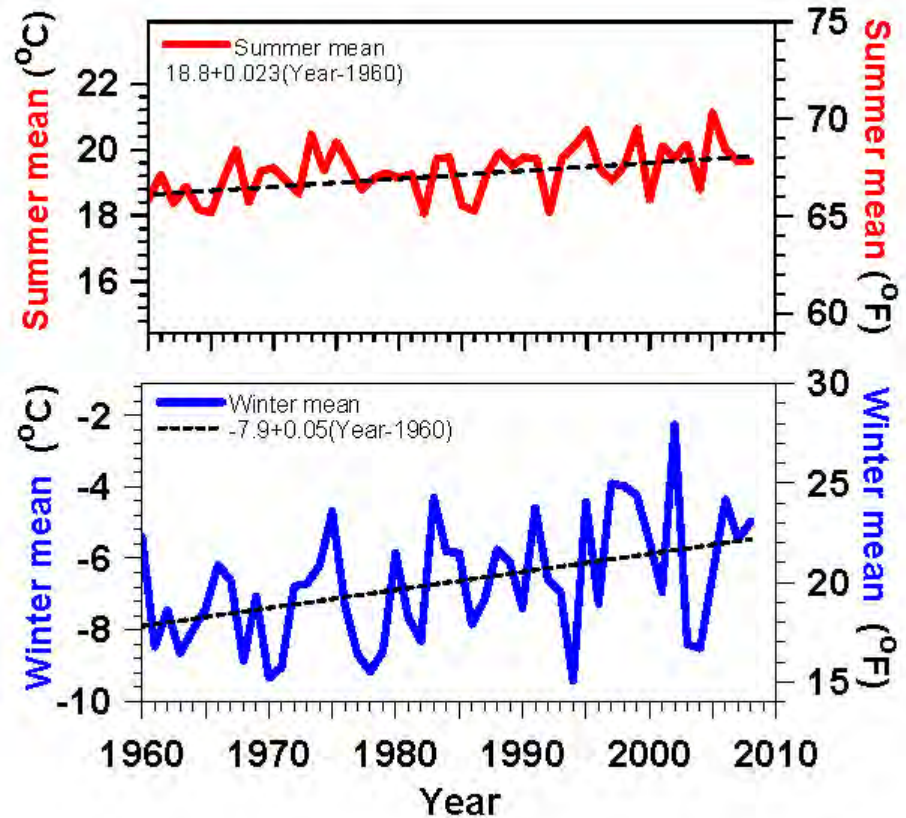
# What Is Happening to Vermont?

- **PAST 40/50 years** (Impact of rising CO<sub>2</sub> detectible)
- **Warming twice as fast in winter than summer**
- **Winter minimums increasing even faster**
- **Lakes frozen less by 7 days / decade**
- **Growing season longer by 3-4 days / decade**
- **Spring coming earlier by 2-3 days / decade**
  
- **Extremes increasing**
- *Evaporation increases with T*
- *More 'quasi-stationary weather patterns'*



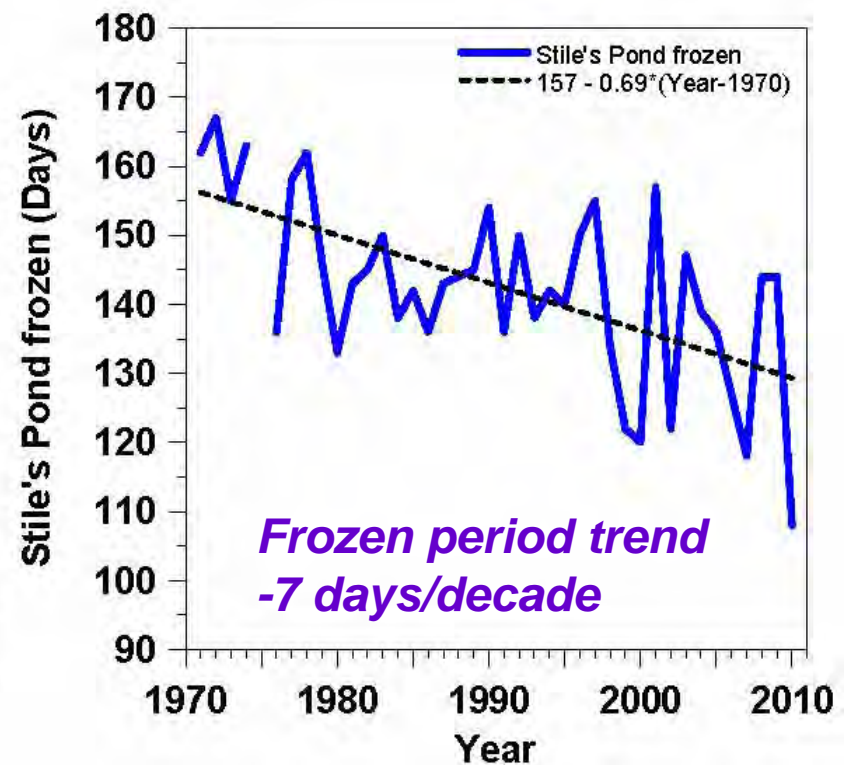
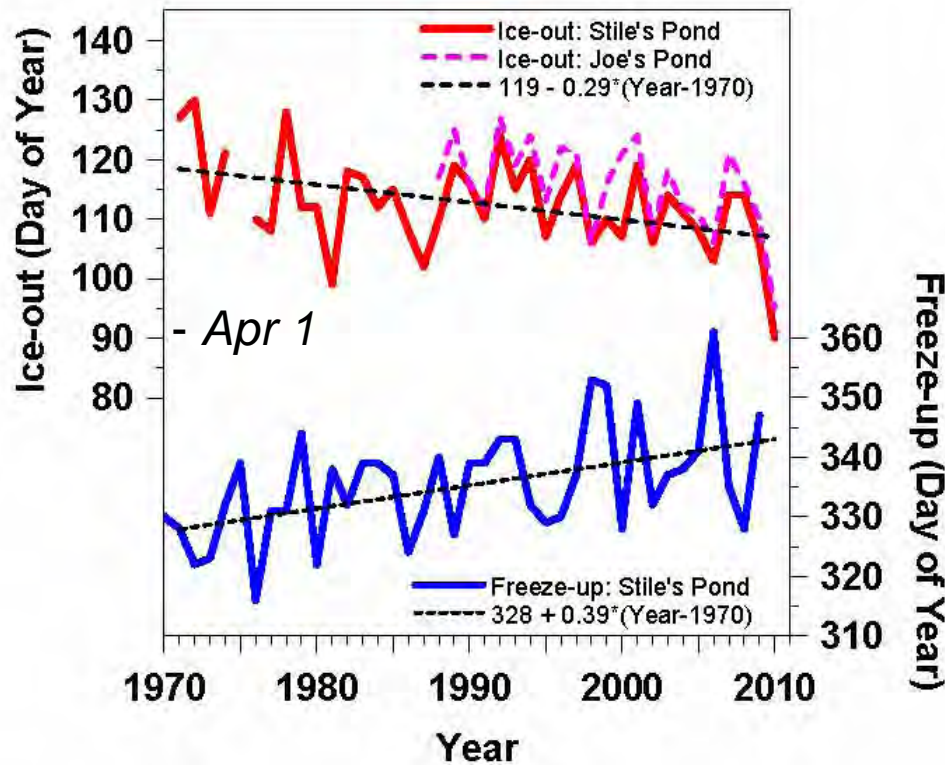
# Vermont Temperature Trends 1961-2008

- **Summer  $+0.4^{\circ}\text{F}$  / decade**
- **Winter  $+0.9^{\circ}\text{F}$  / decade**
- **Larger variability, larger trend**
- ***Less snow (and increased water vapor) drive larger winter warming***



# Lake Freeze-up & Ice-out Changing

## Frozen Period Shrinking Fast

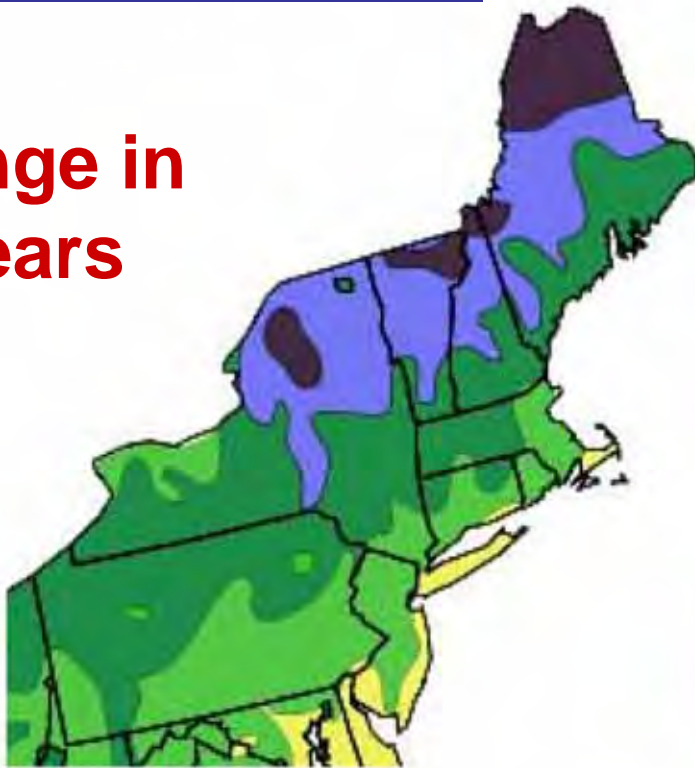


- Freeze-up later **by 4 days / decade**
- Ice-out earlier **by 3 days / decade**
- **Spring runoff peak 3 days / decade earlier**

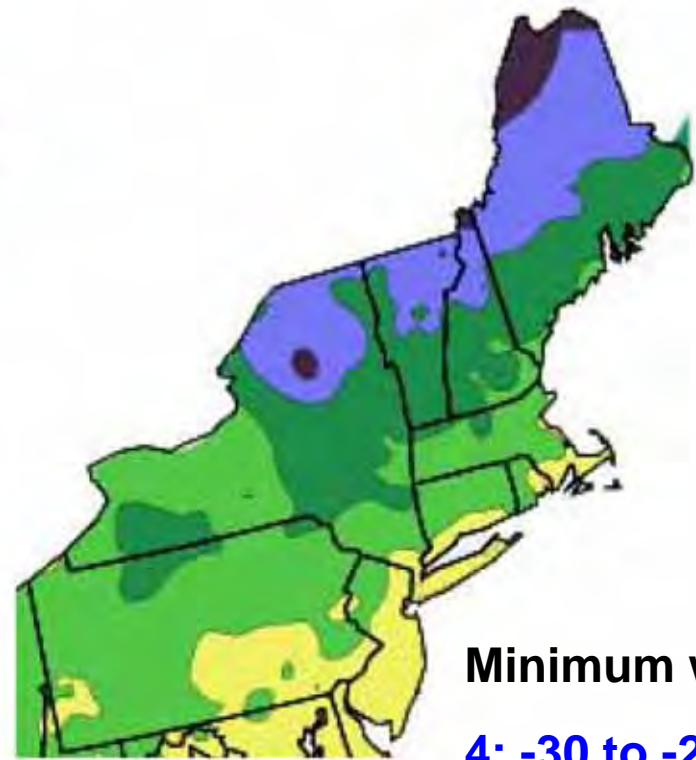
# Winter Hardiness Zones

– winter cold extremes

Change in  
16 years



1990



2006

Minimum winter T

4: -30 to -20°F

5: -20 to -10°F

6: -10 to 0°F

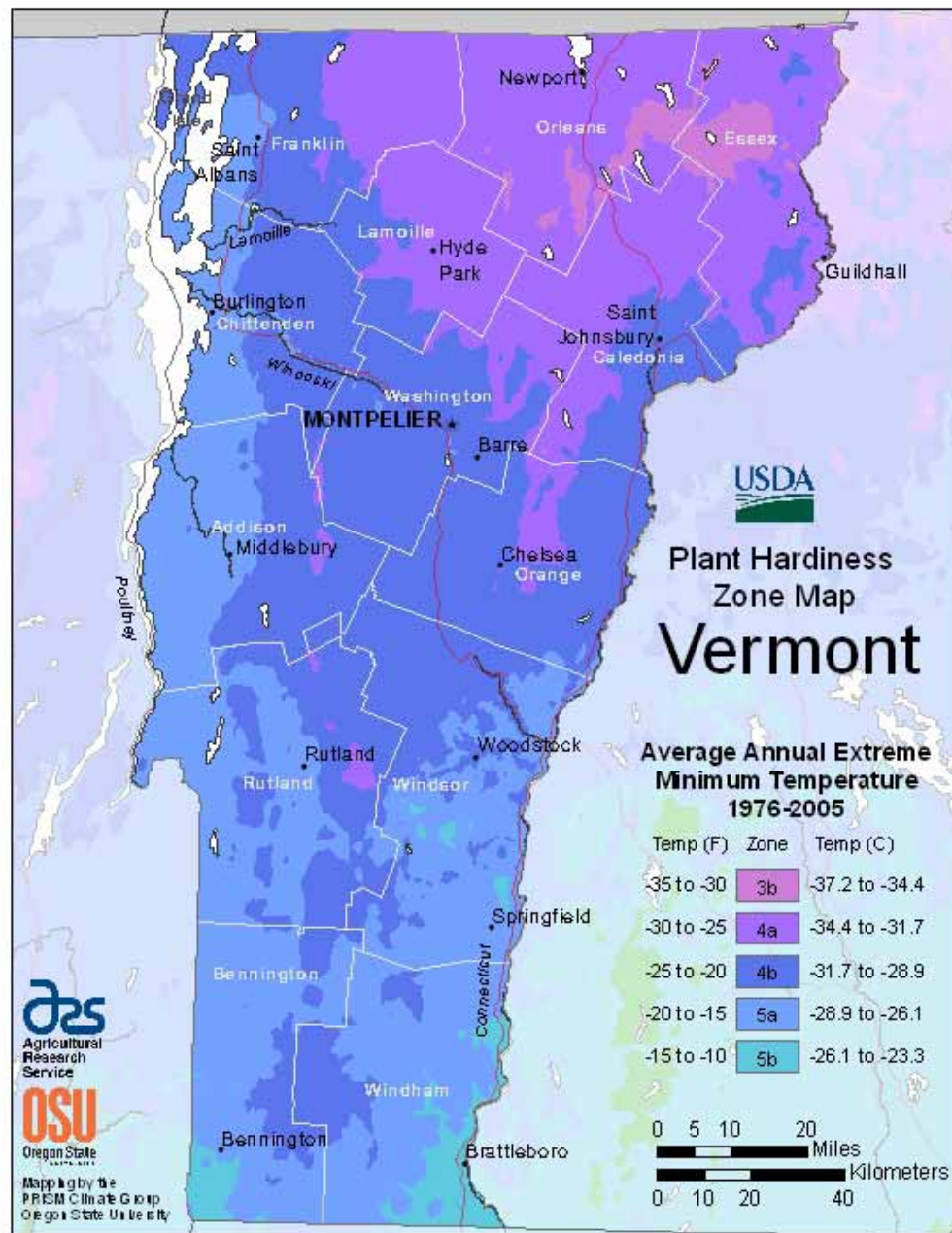
Zone



USDA Hardiness Zones

# Detailed Map (most recent)

- **USDA : VT  
Hardiness Zone  
Map 1976-2005**
  - mean 1990
  - **South into zone 6**
- **Half-zone in 16 yrs  
~ 3°F/ decade**
  - triple the rise-rate  
of winter mean T
- <http://planthardiness.ars.usda.gov/PHZMWeb/>



# Bennington & Brattleboro are becoming zone 6 ( $T_{min} > -10F$ )

- Hardy peaches: 2012
- More pests survive winter
- What is this?



# Bennington & Brattleboro are becoming zone 6

- Hardy peaches: 2012
- More pests survive winter

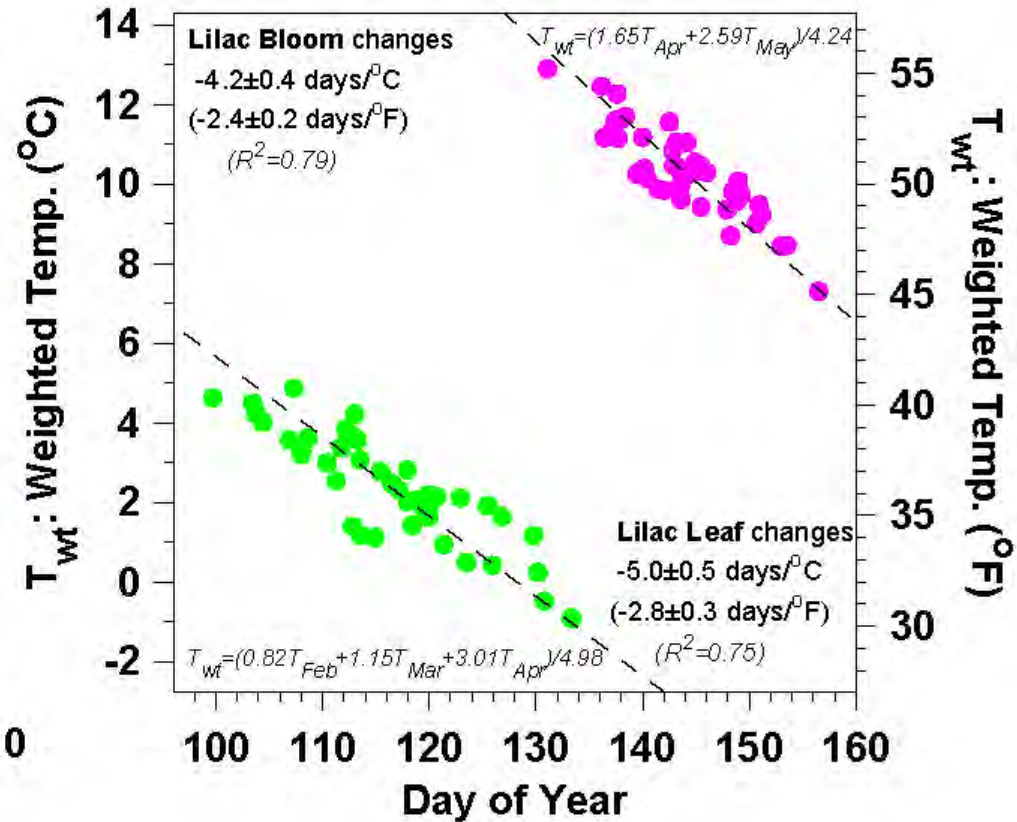
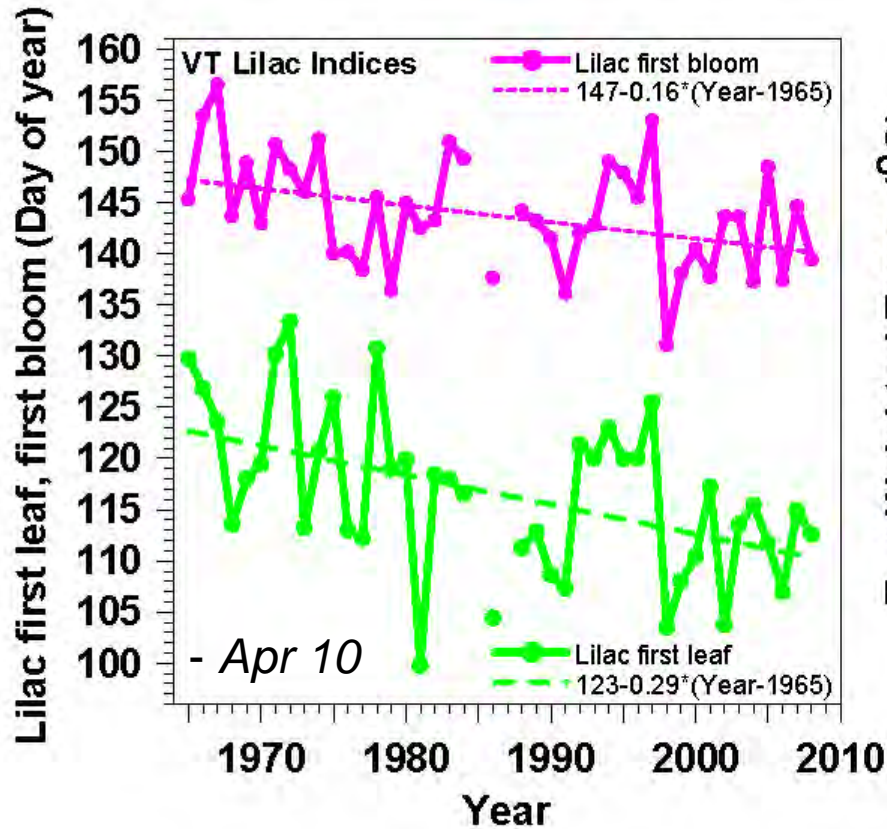
• What is this?

- **Avocado**

- Didn't survive frost
- Late century: in CT
- Our grand-children

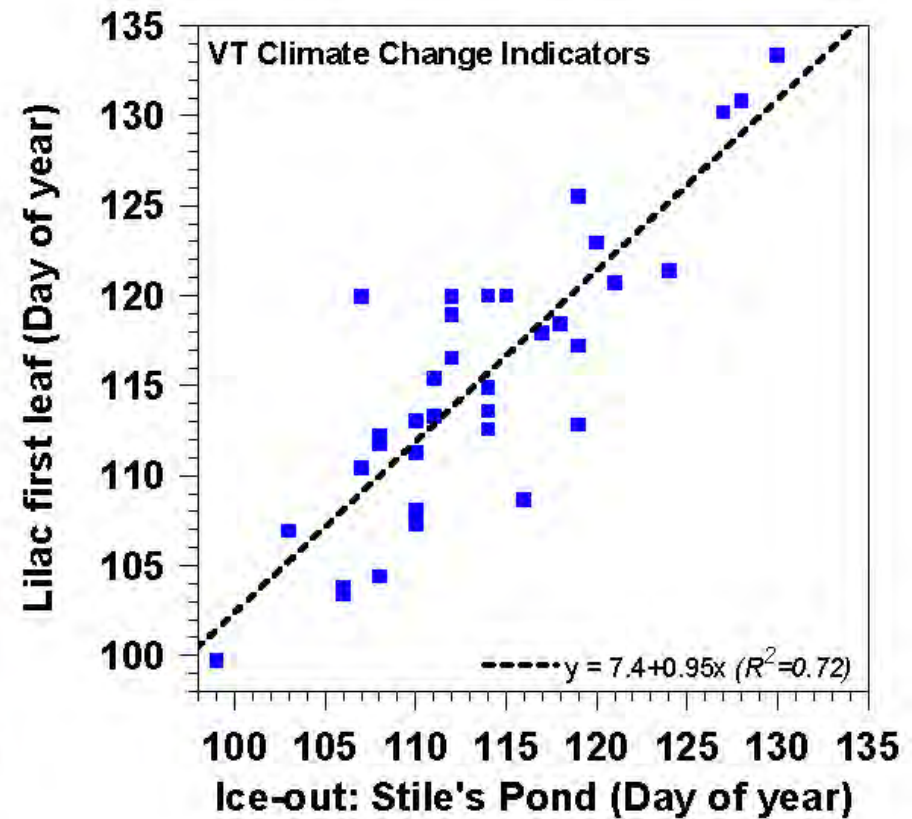
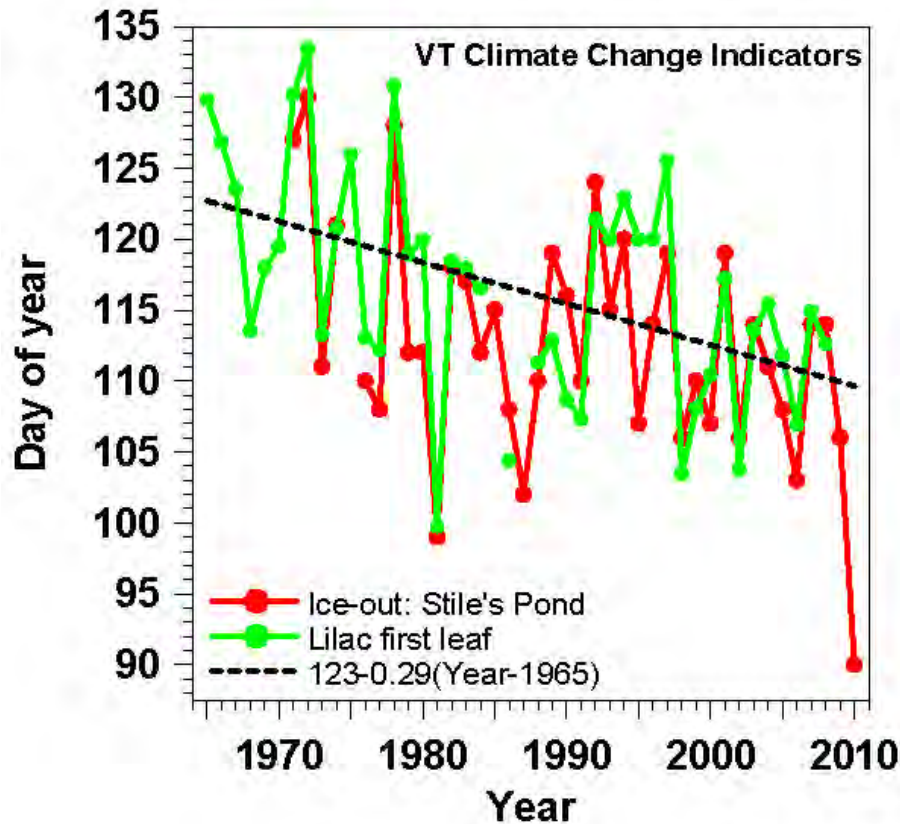


# Lilac Leaf and Bloom



- Leaf-out  $-2.9$  days/decade; Bloom  $-1.6$  days/decade
- Large year-to-year variation related to temperature: 2 to 3 days/°F

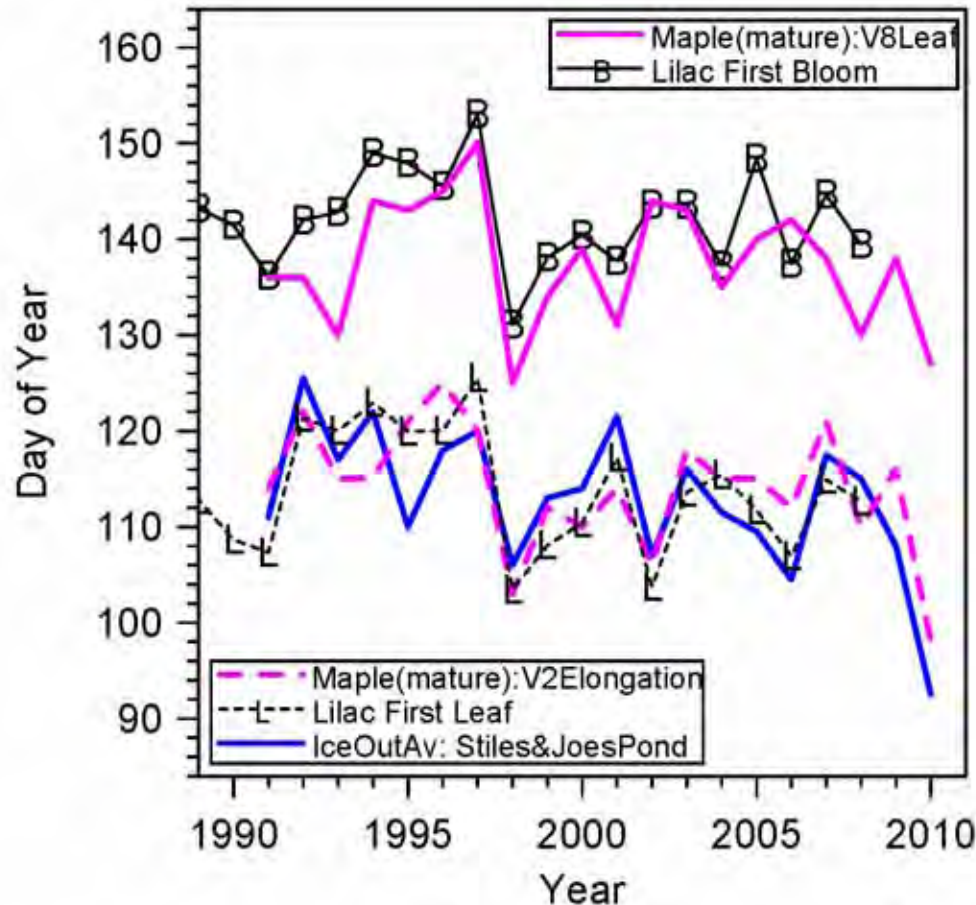
# Lilac Leaf-out and Ice-out Coupled



- Lilac leaf and lake ice-out both depend on Feb. Mar. and April temperatures
- Trends indicate earlier spring



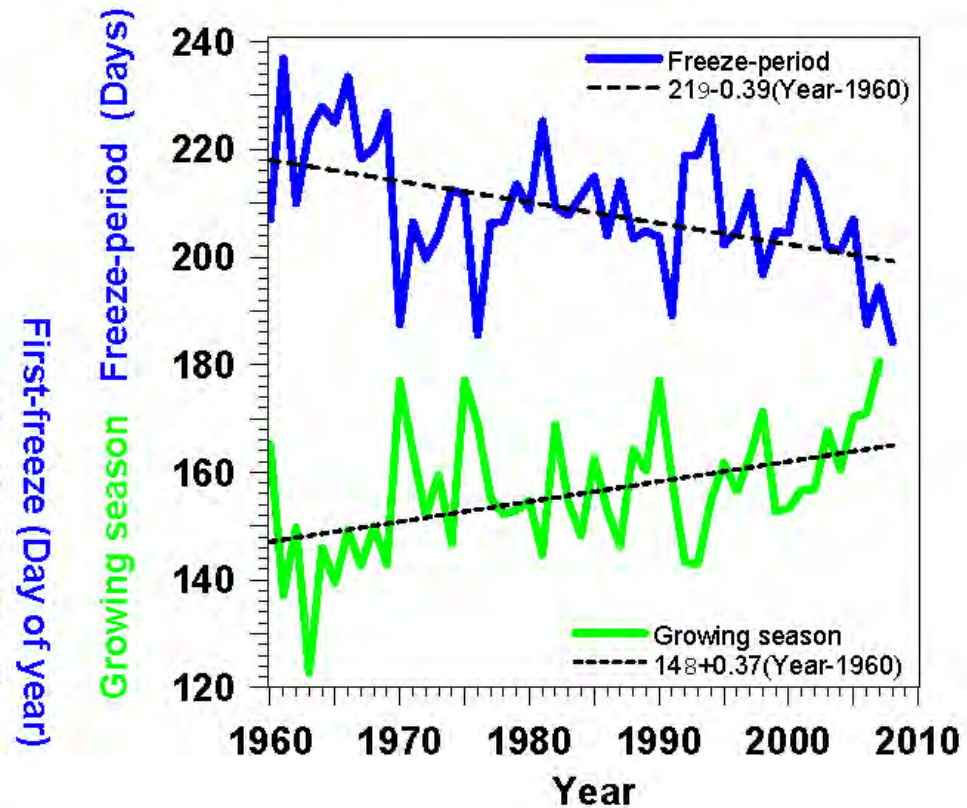
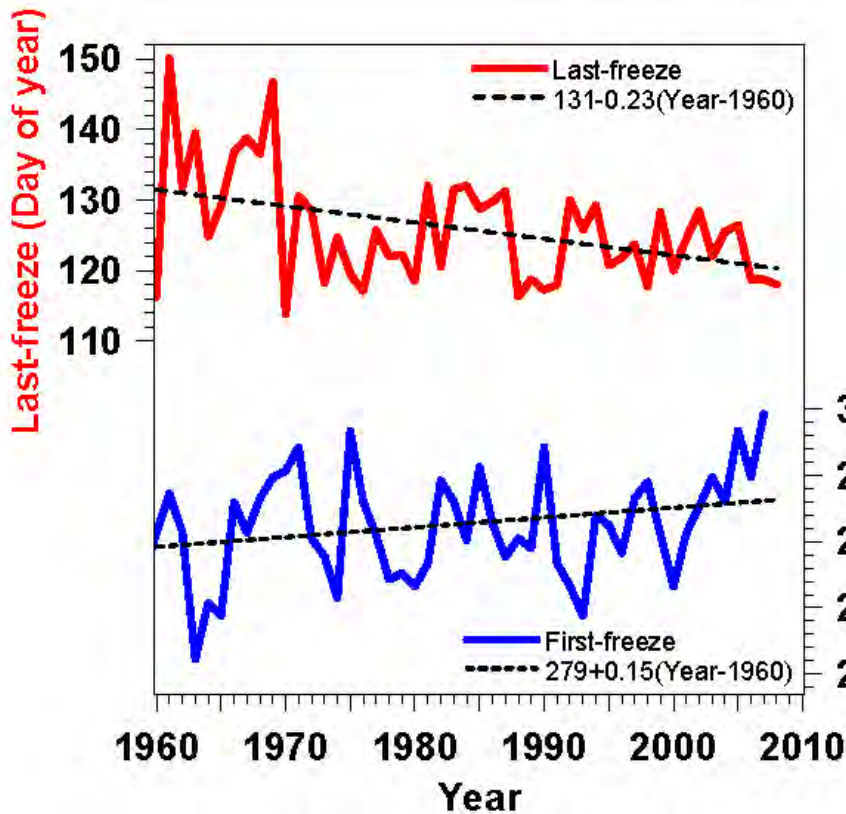
# Sugar Maples in Spring



- Ice-out, lilac leaf, maple bud elongation correlated
- Lilac bloom and maple leaf-out correlated

*Data: Sandy Wilmot, ANR*

# First and Last Frosts Changing



- Growing season for frost-sensitive plants increasing **3.7 days / decade**
- A help for growing “local food”

# Shrinking Winter: Pittsford, VT (Freeze-up used to be mid-November)



**January 7, 2007**

**December 2006:**

- **Warmest on record**



**January 10, 2008**

**Warm Fall:**

- **Record Arctic sea-ice melt**
- **Snow cover in December, ground unfrozen**



# January 2, 2012



# March 11, 2012

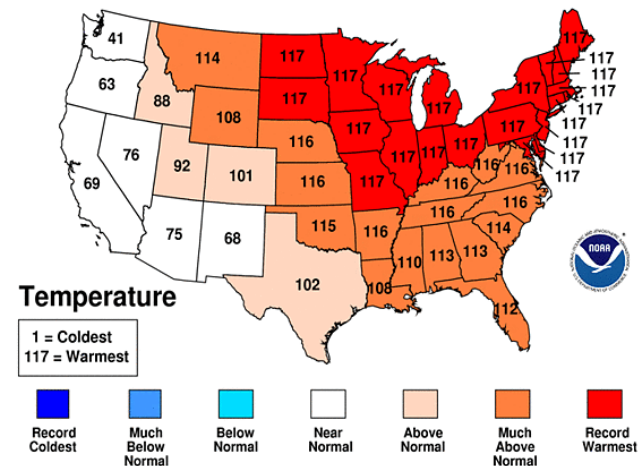


## October 2011– March 2012

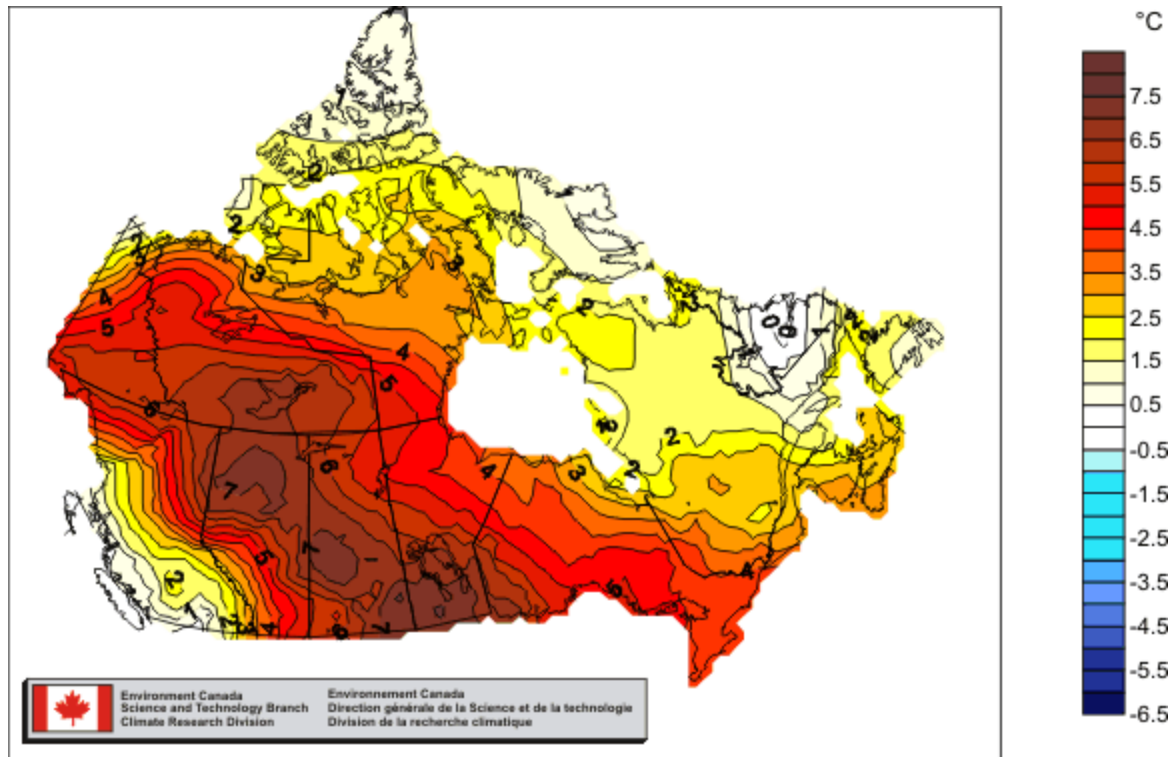
- Warmest 6 months on record
- My garden frozen only 67 days
- No permanent snow cover west of Green Mountains
- Contrast snowy winter 2010-11

## Oct 2011-Mar 2012 Statewide Ranks

National Climatic Data Center/NESDIS/NOAA



# Across the border: Canada



- **Winter 2011-12: 3.6°C (6.5°F) above normal**
  - **Canada's winters also warming 0.9°F/decade**
- **Climate doesn't see the border!**

# Early Spring: Daffodils, Forsythia

*79°F on March 22, 2012*



*Pittsford Vermont*

*3/22/12*



*Pittsford Vermont*

*3/24/12*

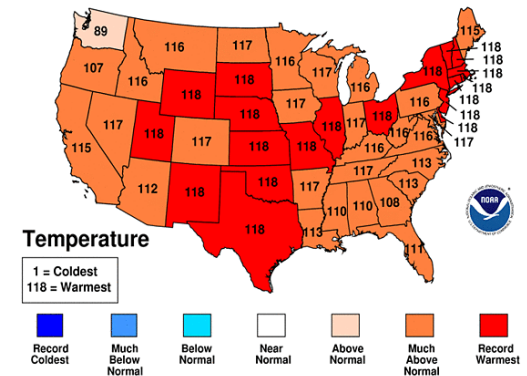
# 2012 Exceptionally Warm

- Burlington Area Extremes
- Highest Average Temperature degrees F
- Days: 9/1/2011 - 8/31/2012
- Length of period: 365 days
- Years: 1850-2012
- Rank Value Ending Date
- **1 50.4 8/31/2012**
- 2 48.4 8/31/2002, 8/31/1949
- 4 48.2 8/31/2010
- 5 48.0 8/31/1999
- 6 47.9 8/31/2006
- 7 47.8 8/31/1991, 8/31/1995
- 9 47.6 8/31/1899, 8/31/1903

(Scott Whittier: NWS-BTV)

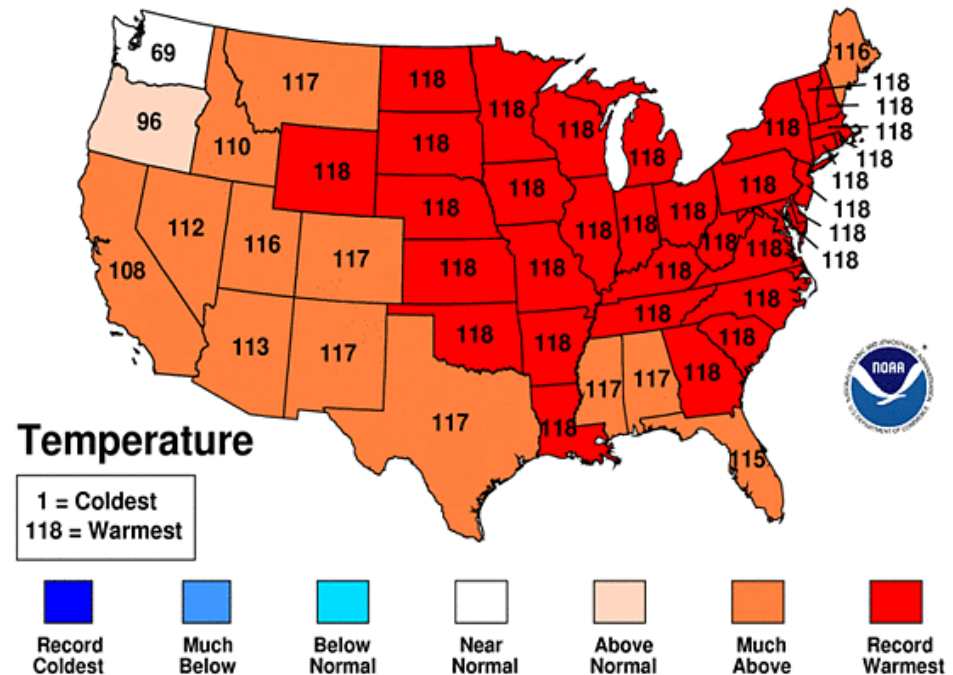
## January-December 2012 Statewide Ranks

National Climatic Data Center/NESDIS/NOAA



## January-August 2012 Statewide Ranks

National Climatic Data Center/NESDIS/NOAA



**December 21, 2012**

**January 15, 2013**



**Past  
Month**

- **Dec 25: Ground froze hard**
- **Dec 27-28: Foot of snow**
  - **Air temperatures plunged but ground thawed under snow**
- **Jan 12-14: 45-50F**
  - **Snow melted**
- **Jan 15: Time to dig again..**
- **Followed by freeze-up.. snowmelt..**



# Vermont Winter 2006



- **Sun is low; snow reflects sunlight, except where there are trees - shadows**
- **Sunlight reflected, stays cold; little evaporation, clear sky; earth cools to space**
- ***Feedbacks Amplify: Less snow, warmer winters (2012)***

# Spring Climate Transition



- **Before leaf-out**

- Little evaporation** → Dry atmosphere, low humidity
- Low water vapor greenhouse
- Large cooling at night
- Large diurnal temp. range  
giving warm days, cool nights and frost

- **After leaf-out**

- Large evaporation** → Wet atmosphere, low cloudbase
- Small cooling at night
- Reduced maximum temperature
- Reduced chance of frost

- ***Spring is coming earlier: 2012 was extreme***

# Summer dry-down

- **Wet in spring**
- **Soil moisture falls:  
summer dry-down**
- **Low humidity &  
little rain**
- *Can lock-in drought in  
central US: as 2012*



# Many Wet Summers in Vermont – till 2012



- 2004, 2006, 2008, 2009, (2010), 2011 all wet
- **Direct fast evaporation off wet canopies**
  - *Evaporation-precipitation feedback increases rain*

# Fall Climate Transition

- **Vegetation delays first killing frost**
- While deciduous trees still evaporating: moister air with clouds
- Water vapor & cloud greenhouse reduces cooling at night and prevents frost
- Till one night, dry air advection from north gives first hard frost.
- Vegetation dies, skies become clearer and frosts become frequent
  
- *The opposite of what happens in Spring with leaf-out!*

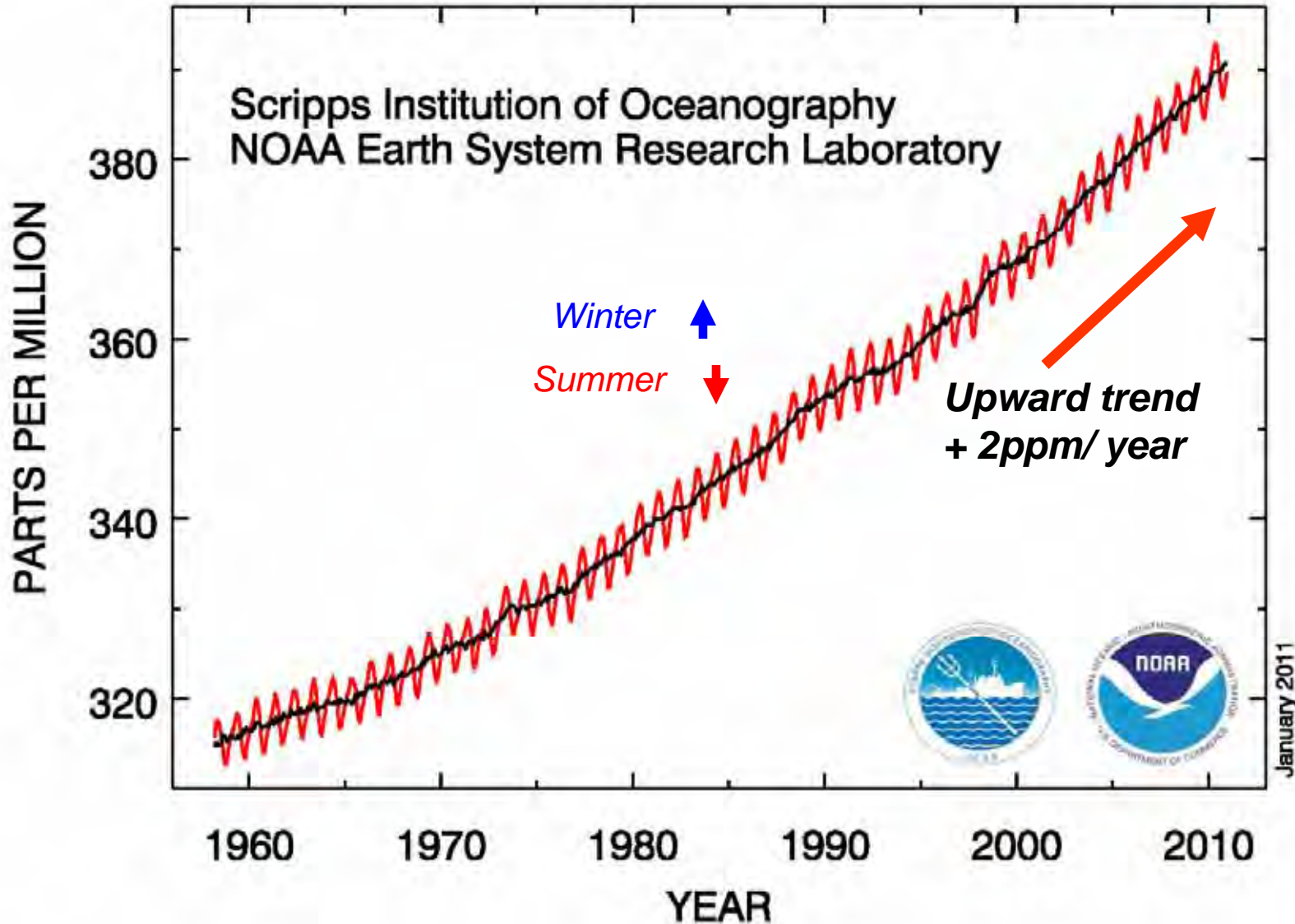


*Clear dry blue sky after frost. Forest evaporation has ended; water vapor greenhouse is reduced, so Earth cools fast to space at night*

***Later frost: Growing season getting longer***

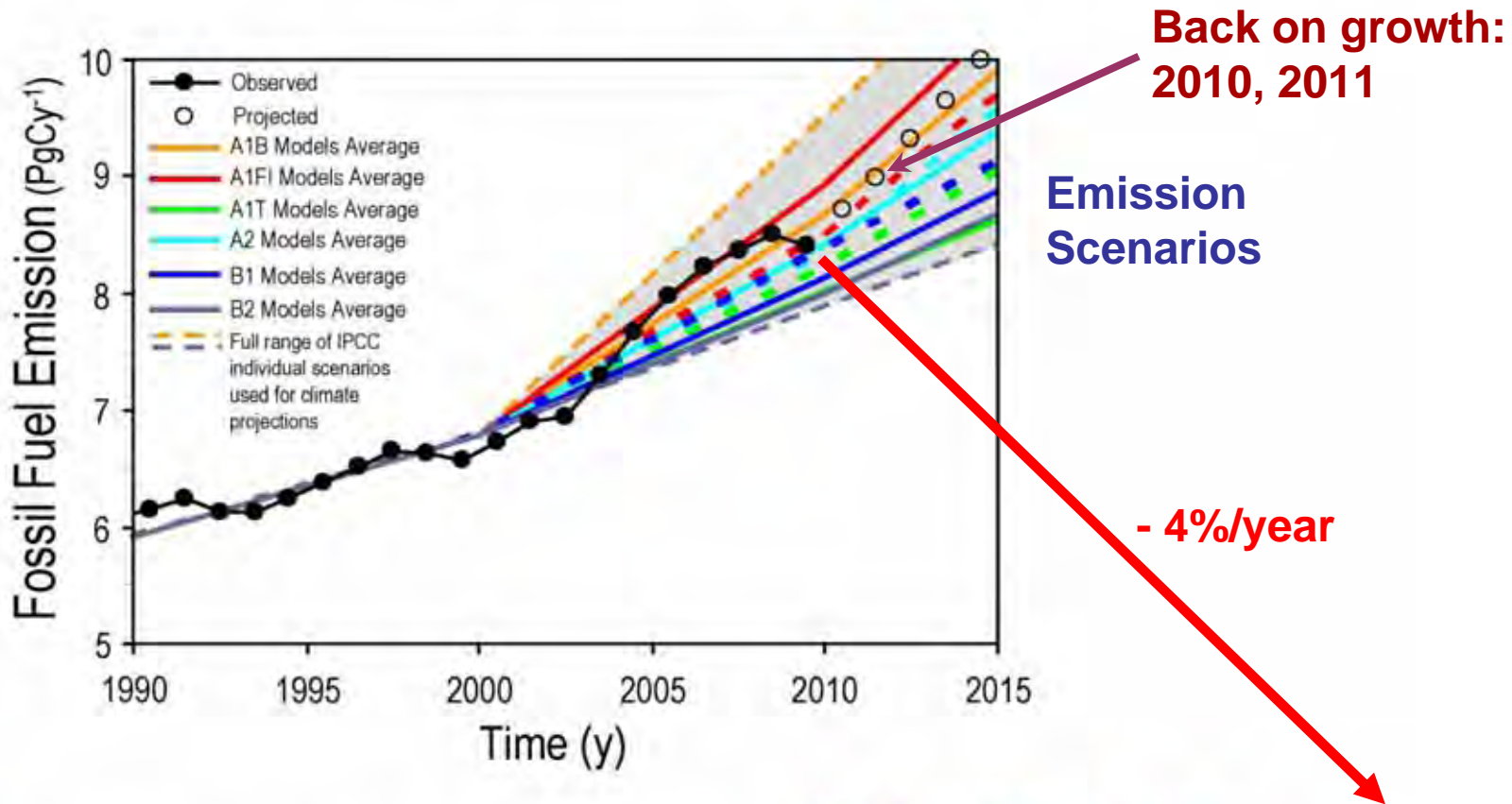
# Carbon Dioxide Is Increasing

## Atmospheric CO<sub>2</sub> at Mauna Loa Observatory

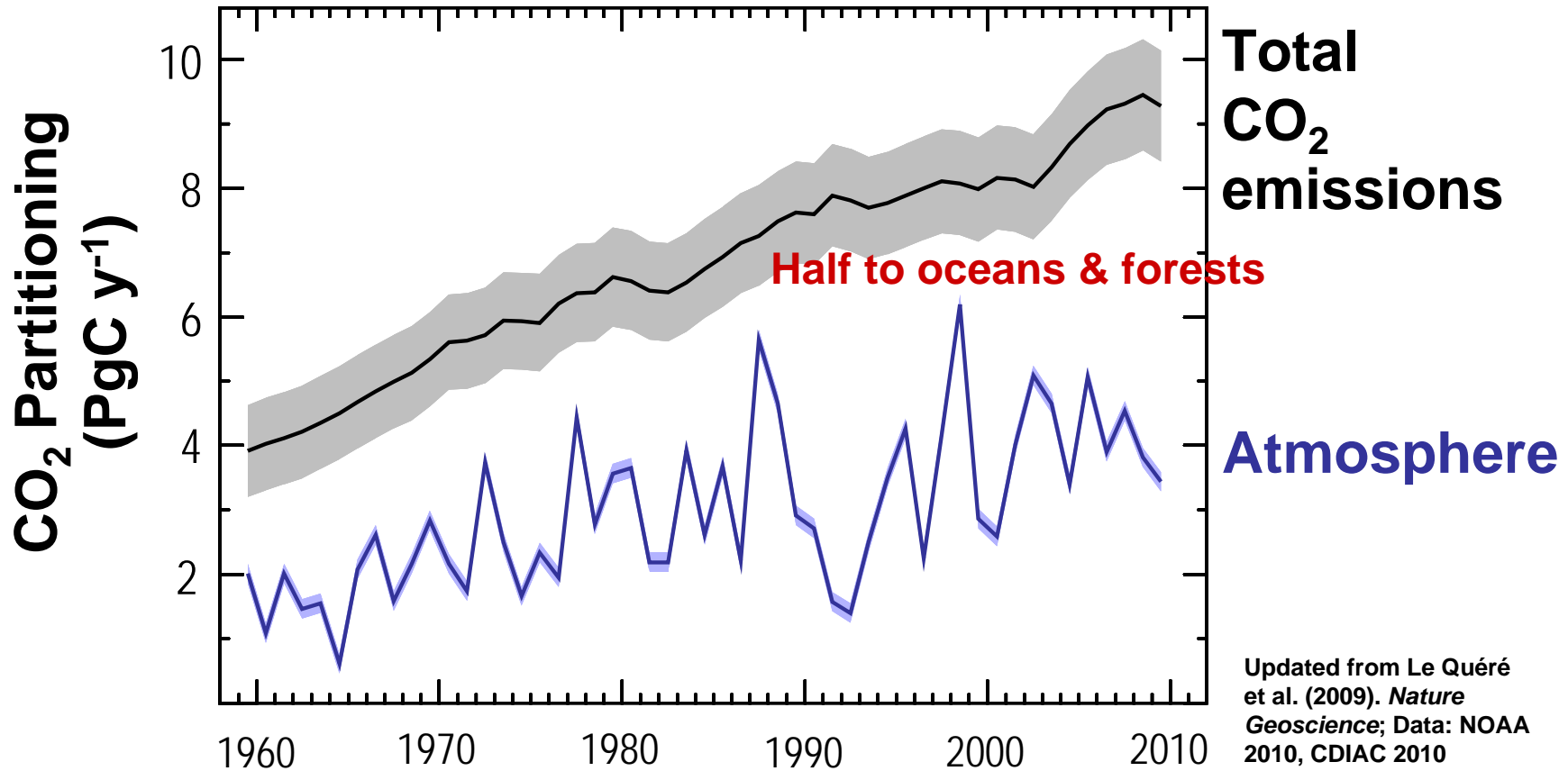


# 2009 Was “Good” for the Earth

## Fossil Fuel Emissions: Actual vs. IPCC Scenarios



# Only Half of Total CO<sub>2</sub> Emissions Remain in the Atmosphere



It takes at least a century to remove CO<sub>2</sub> from the atmosphere, and many centuries to remove it from oceans



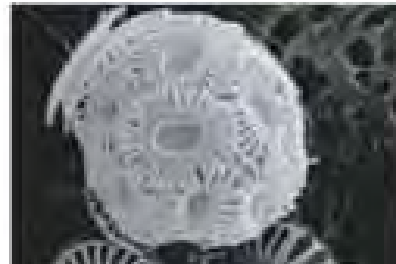
# Rising Ocean Acidity Threatens Organisms



- From the Tropics to the Arctic, the seas are sucking up emissions of  $\text{CO}_2$  — from burned fossil fuels
- When  $\text{CO}_2$  dissolves in water, carbonic acid is produced; the oceans are becoming more acidic



(Ruttiman, *Nature*, 31 Aug. 2006)



# Rise of Greenhouse Gases (GHG) Shift Energy Balance of Planet

- The atmosphere is **transparent to light** from the sun, **but not to infrared radiation** from the earth
- **GHG:** H<sub>2</sub>O, CO<sub>2</sub>, CH<sub>4</sub>, O<sub>3</sub>, CFCs trap the infrared from the surface, giving climate suitable for life by warming planet 60°F
- Rise of CO<sub>2</sub> alone has only a small warming effect

**BUT...**



# Water, Snow & Ice Give Positive Radiative Feedbacks

- As Earth warms, evaporation and water vapor increase and this is 3X amplifier on CO<sub>2</sub> rise
- As Earth warms, snow & ice decrease and reduced SW reflection amplifies warming in Arctic in summer and mid-latitudes in winter
- Doubling CO<sub>2</sub> will warm globe about 5°F (3°C)
  - Much more in the cold regions and over land, which responds faster than oceans

# Global Warming Is Unequivocal

## IPCC: February 2, 2007

### Since 1970, a rise in:

- Global surface temperature
- Lower atmosphere temperatures
- Global sea-surface temperatures
- Global sea level
- Ocean heat content
- Water vapor
- Rainfall intensity
- Extratropical precipitation
- Hurricane intensity
- Drought
- Extreme high temperatures
- Heat waves

### Decrease in:

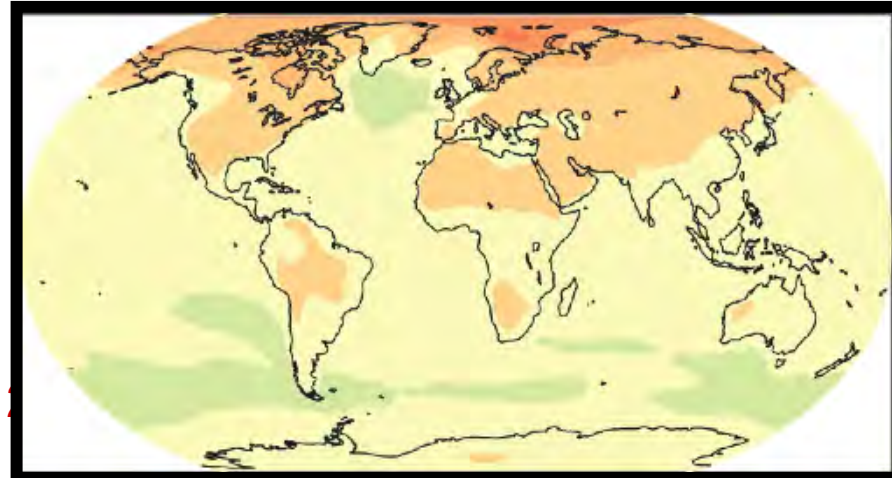
- NH snow extent
- Arctic sea ice
- Glaciers
- Ocean pH (increasing acidity)



# Predicted Change in Temperature

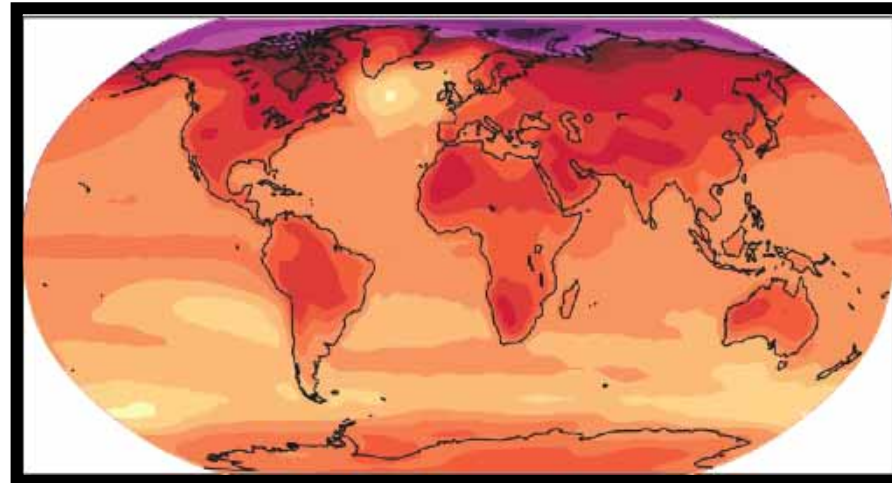
2020-2029 and 2090-2099, relative to 1980-1999 (°C)

**“Committed”**



**(We did nothing for the last 20 years)**

**Still up to us!**



**(We could halve this if we act now)**

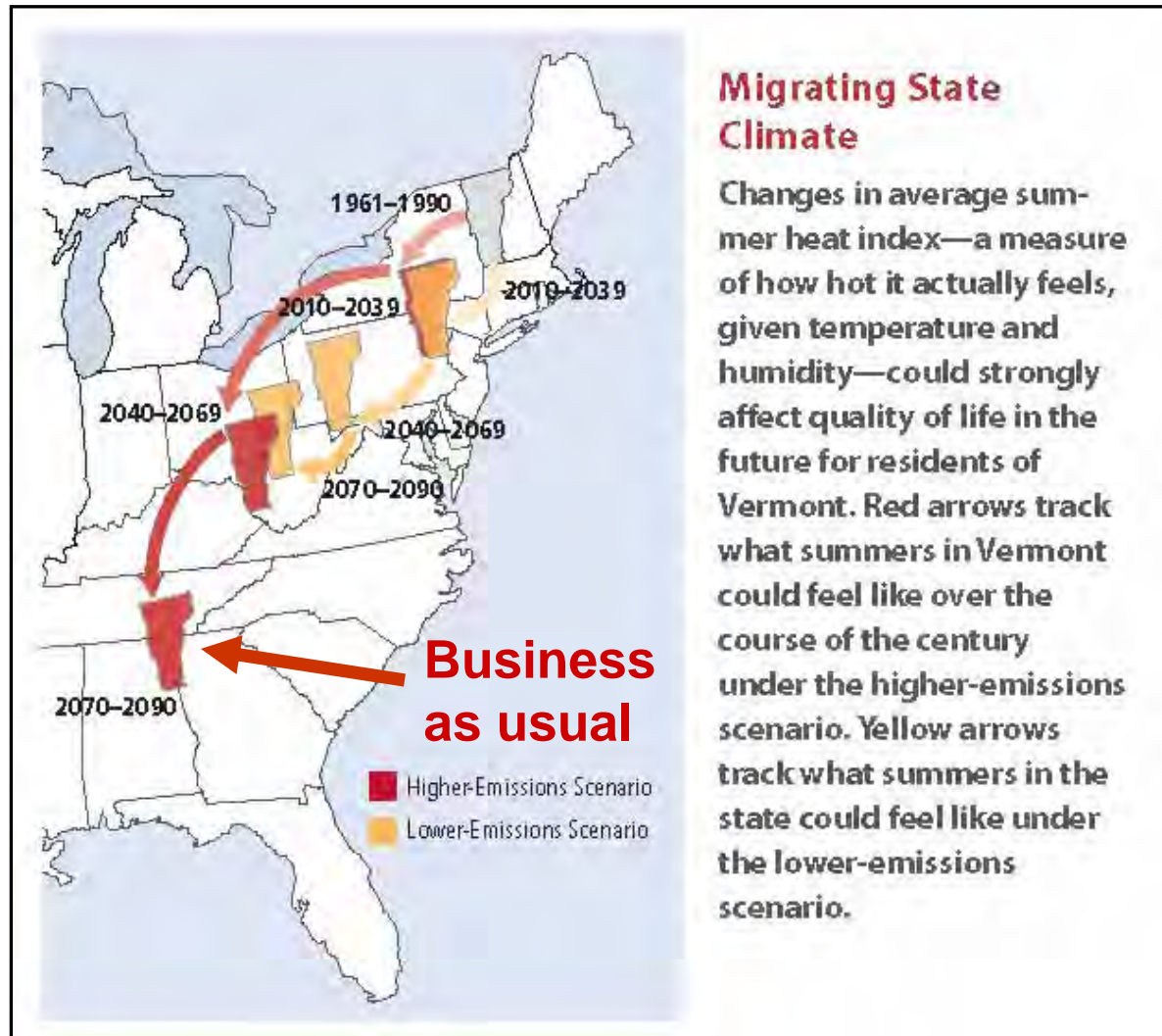


**[°C]**

# Vermont's Future with High and Low GHG Emissions

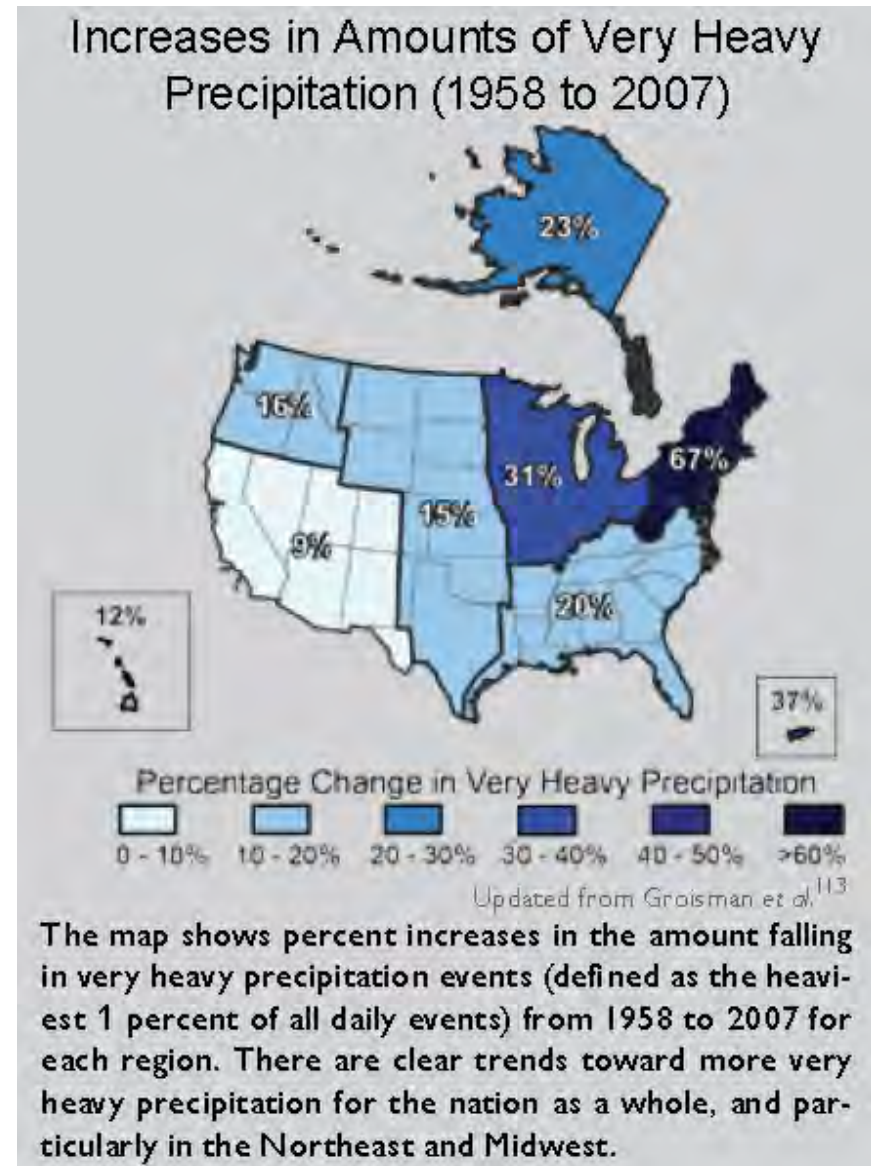
What  
about  
skiing?

What  
about  
tropics?



# Very Heavy Precipitation Is Increasing

- **Precipitation Extremes**
- **Most of the observed increase in precipitation during the last 50 years has come from the increasing frequency and intensity of heavy downpours.**
- **67% increase in Northeast**
- **NE stormflow increasing**  
*(Lent, USGS, 2010)*



**Summer  
stormflow  
increases  
20-50%**

***Lent (2010)  
USGS, Me***

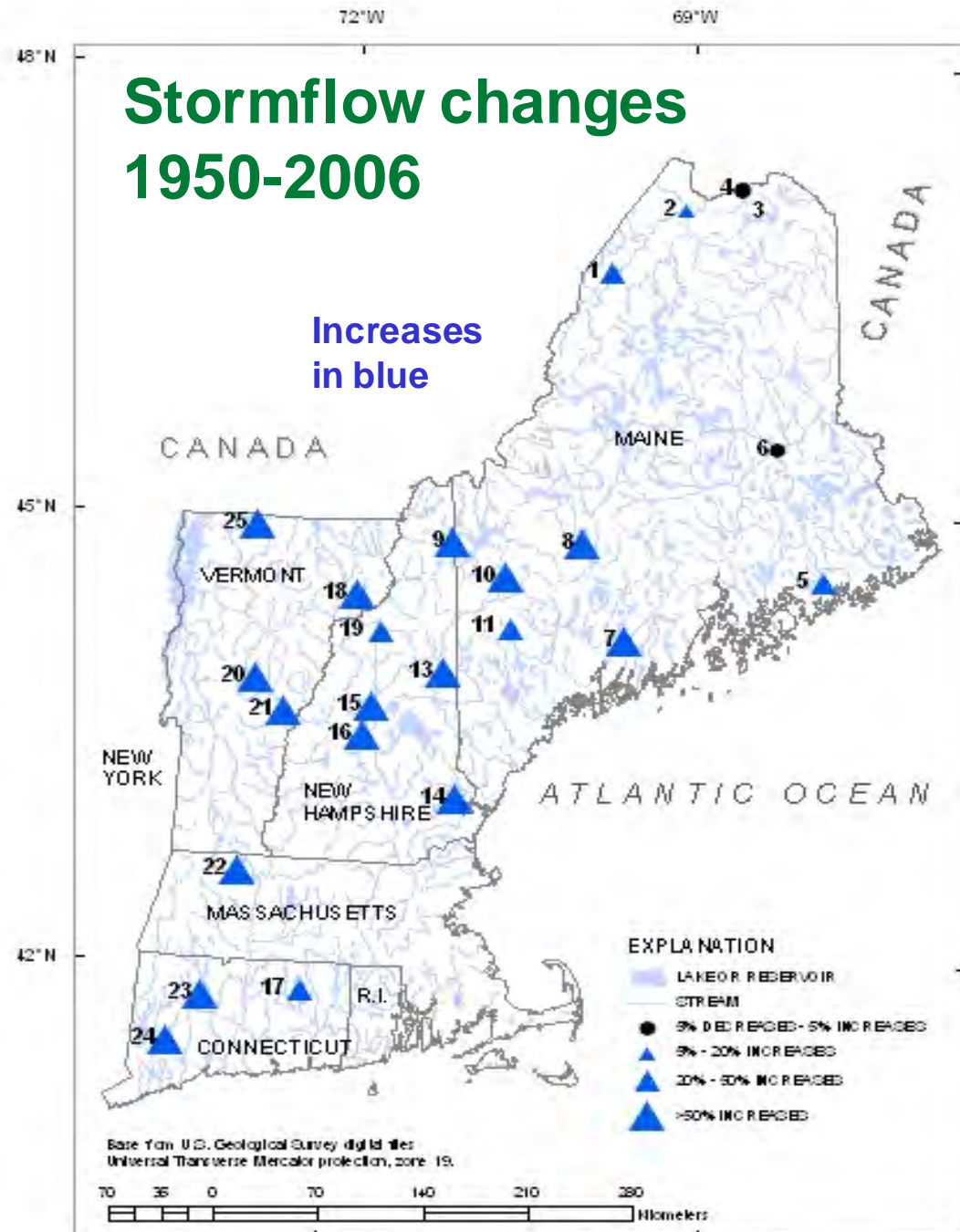


Figure 4. Geographic distribution of summer stormflow trends, 1950-2006.



# Extreme Weather (precip.)

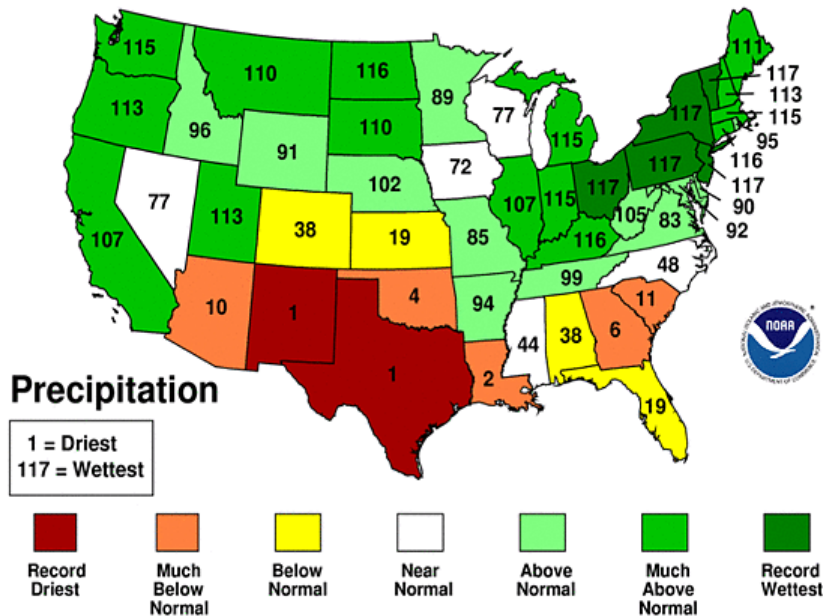
- Precip. is condensation of atmospheric water vapor - large latent heat release drives storms
- *Saturation vapor pressure at cloud-base increases steeply with temperature (6%/°C)*
- Quasi-stationary large-scale flow means longer rain events in low-pressure convergent regions, and longer droughts in high-pressure divergent regions
- *As climate changes, quasi-stationary large-scale modes appear to be more frequent*
  - *Cause may be Arctic warming- needs more study*

# 2011 Vermont Floods

- Record spring flood on Lake Champlain
- Record floods following TS Irene
- Record wet March-August, 2011: OH to VT  
(but record drought in TX & NM)
- Quasi-stationary pattern for 6 mos

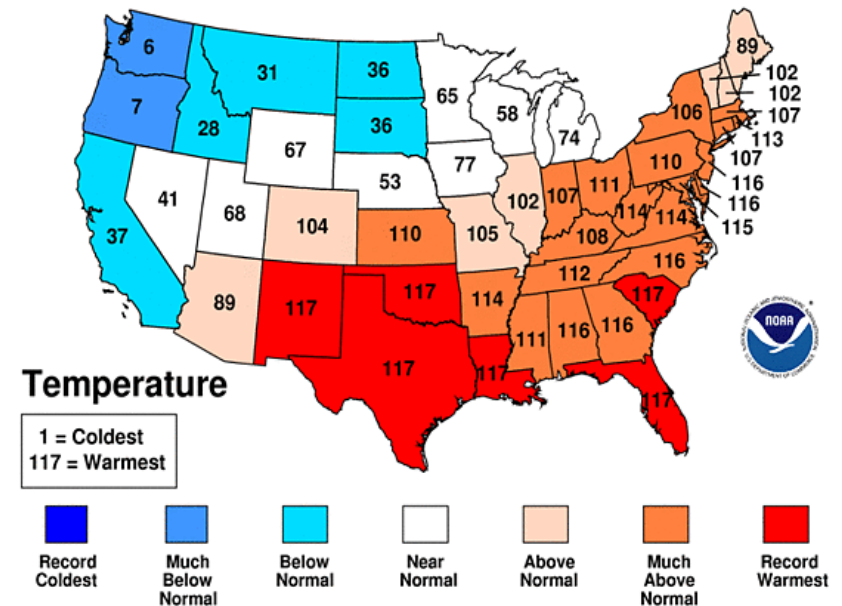
## March-August 2011 Statewide Ranks

National Climatic Data Center/NESDIS/NOAA



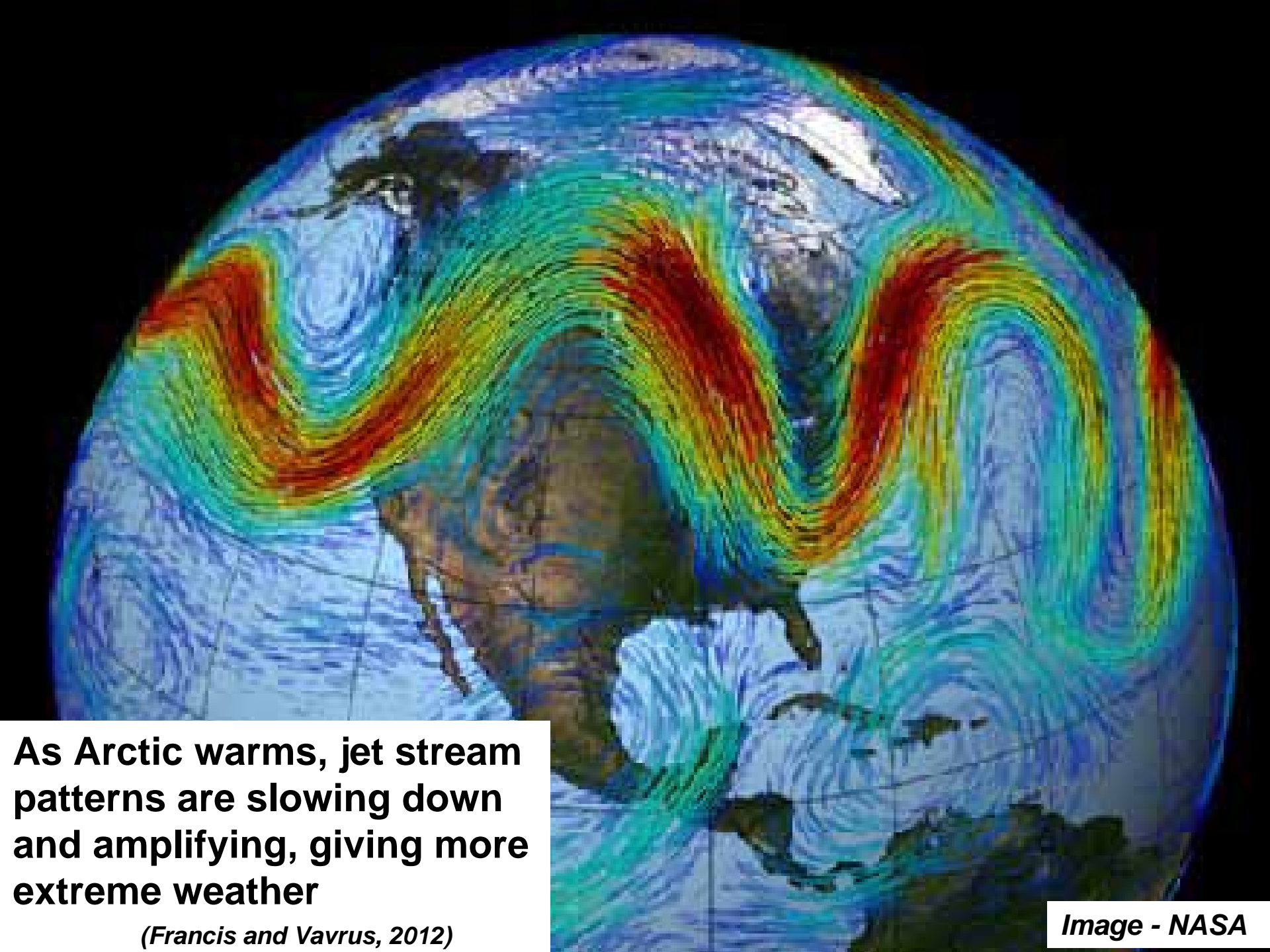
## March-August 2011 Statewide Ranks

National Climatic Data Center/NESDIS/NOAA



# 2011 Classic VT Flood Situations

- **Spring flood:** heavy rain and warm weather, melting large snowpack from 2010 winter
  - 70F (4/11) and 80F(5/27) + heavy rain
  - record April, May rainfall: 3X at BTV
  - Severe Winooski flood
  - Lake Champlain record flood stage of 103ft
- **Irene flood: tropical storm** moved up east of Green Mountains
  - dumped 6-8 ins rain on wet soils
  - Extreme flooding
  - (Floyd on 9/17/1999 had similar rain - but with dry soils there was less flooding)



**As Arctic warms, jet stream patterns are slowing down and amplifying, giving more extreme weather**

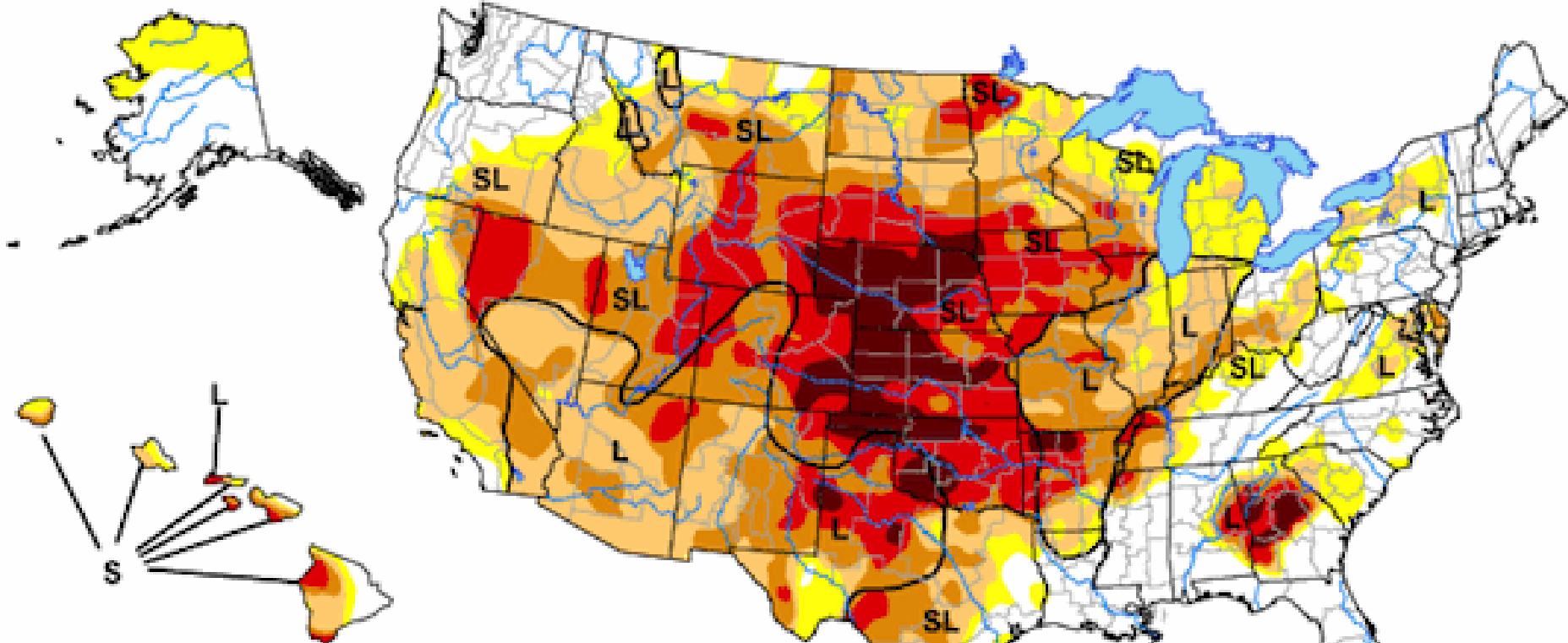
*(Francis and Vavrus, 2012)*

**Image - NASA**






# U.S. Drought Monitor

September 25, 2012


Valid 7 a.m. EDT



## Intensity:

-  D0 Abnormally Dry
-  D1 Drought - Moderate
-  D2 Drought - Severe
-  D3 Drought - Extreme
-  D4 Drought - Exceptional

## Drought Impact Types:

-  Delineates dominant impacts
- S = Short-Term, typically <6 months (e.g. agriculture, grasslands)
- L = Long-Term, typically >6 months (e.g. hydrology, ecology)

The Drought Monitor focuses on broad-scale conditions. Local conditions may vary. See accompanying text summary for forecast statements.

<http://droughtmonitor.unl.edu/>



Released Thursday, September 27, 2012

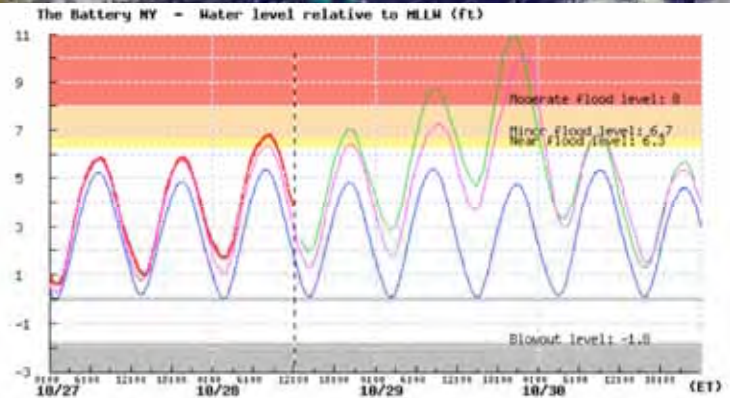
Author: Anthony Artusa, NOAA/NWS/NCEP/CPC

# Three Successive Years of East-Coast Tropical Storm Disasters

- **September 21, 2010:** Hurricane Igor with winds and record rainfall devastates eastern Newfoundland, isolating 150 communities as swollen rivers washed away the only roads into town and all connecting bridges. The worst storm ever in a province known for its storms.
- **August 28, 2011:** Tropical Storm Irene devastates Vermont, as heavy rain washes out roads and bridges, cutting off 20 towns
- **October 29, 2012:** Hurricane Sandy devastates New Jersey and New York City with winds and record storm surge flooding the subway tunnels, airports and shorelines

# Disasters Happen in Strong Storms

- Hurricane Sandy hits NYC and floods subway tunnels: Oct 29 2012
- **Extreme weather event + climate change = disaster**
  - **≈ 1ft rise of mean sea-level**
  - **Gulfstream warm + 5°F**
  - **Blocking high: NE Canada**
  - **≈ 2ft extra storm surge**
  - **Extra 3ft = disaster**



# Increasing Extreme Weather

- *The answer to the oft-asked question of whether an (extreme) event is caused by climate change is that it is the wrong question.*
- *All weather events are affected by climate change because the environment in which they occur is warmer and moister than it used to be. (Trenberth: Climatic Change 2012)*
- .. and global weather patterns are changing



# Water: *Amplifying Feed-backs*

- **GHGs up → Oceans, land warmer → Evaporation up**
- **Water Vapor up**
  - **WV infrared greenhouse up**
    - **Approx triples climate warming of planet**
    - **Locally reduces night-time cooling**
      - **Winter  $T_{\min}$  increase: less severe winters**
      - **Longer growing season between frosts**
  - **Latent heat release in storms up**
    - **Increases precipitation rates**
      - **Increases precipitation extremes**
    - **Increases wind-speeds and storm damage**
- **Snow and ice down**
  - **Less sunlight reflected**
    - **Warmer Arctic in summer**
    - **Warmer northern winters**
  - **Less ice-cover: more evaporation**

# Many Challenges Face Us

- **Sea-level rise: 3 - 5 feet / century likely**
- **Extreme weather: Floods, fires, & drought**
  - **32 weather disasters >\$1B in 2011**
- **Melting Arctic and permafrost—  
methane release is amplifying feedback**
- **Ecosystem collapse, including perhaps forest  
and ocean ecosystems**
- **Collapse of unsustainable human population**

# Can We Stop “Dangerous Climate Change”?

- **Yes: Quickly stabilize atmospheric CO<sub>2</sub>**
- **This means an 80% drop in CO<sub>2</sub> emissions!**
- **This is very difficult**
  - **Fossil fuels have driven our industrial growth and population growth for 200 years**
  - **Our “lifestyle” has become dependent on fossil fuels**

# Efficiency Comes First

- **We need to double or triple our energy efficiency because...**
  - **We cannot replace current fossil fuel use with biofuels & renewable energy**
  - **Oil and gas reserves are limited, but coal, shale-gas & shale-oil reserves are sufficient to push CO<sub>2</sub> to 1,000 ppm—and in time melt icecaps**
    - **Can we “sequester” CO<sub>2</sub> (put it back in the earth)?**

# Why Is It Difficult for Us?

- **Fossil fuels reserves are worth \$20-30T**
  - Regulating emissions of CO<sub>2</sub> is an “unfair cost” to the “free market”
  - Yet we are still subsidizing fossil fuels
- **Politics lost in fantasy**
  - Ignoring Earth system and climate issues
  - Ignoring future costs
    - Manhattan within 1-ft of flooding with Irene
    - Did they put waterproof doors on tunnels? No

# Why Is It Difficult for Us?

- The “American dream” is crumbling
  - “Economic growth” based on **fossil fuels, debt, and consumerism is unsustainable** — and a disaster for the planet!
- Individual “rights” and the needs of humanity must be **balanced** against the needs of the earth’s ecosystem
- We don’t know how to **guide and manage technology** —so the result is tremendous successes and catastrophic failures

# How Do We Manage the Earth?

(When there is so much we don't know)

- **Need a long time horizon:**
  - **Generational to century (*Forest timescale*)**
- **We need some new rules / guidelines !**
  - **Our numbers are so great**
  - **Our industrial impact is too large**
  - **Maximizing profit as a guiding rule has failed us**
- **We must manage our society better!**

# Broad Guidelines or Rules to Minimize Impacts

- **Minimize the lifetime of human waste products** in the Earth system and eliminate waste with critical biosphere interactions
- **Minimize the use of non-renewable raw materials, and**
- **Maximize recycling and re-manufacturing**
- **Maximize the efficiency** with which our society uses energy and fresh water, and
- **Maximize the use of renewable resources**



# Examples of Long-Lived 'Waste'

- **CFCs** – refrigerants – very stable – lifetime centuries - broken down by sunlight in stratosphere – catalyze ozone destruction, which protects earth from UV
- **CO<sub>2</sub> from fossil fuels** – lifetime centuries – a greenhouse gas that traps earth's heat radiation – pushing earth to warmer climate
- **Nuclear waste** – plutonium-239: half-life 24000 years – nuclear weapons

# What Do We Need?

- So we need **honest, truthful, smart** pathways forward
  - That will **not frighten people** into paralysis
  - That will **spread hope, not anger or despair**
  - That **sidestep ideological barriers with new language**
  - That **develop adaptive governance**
    - The US Constitution gives no rights to the Earth
  - **That respect Earth system processes & limits**

# The Future Is Not Our Past

- **Collectively, we create the future, so we need to plan for a transition to a sustainable society**
- **Efficient society**
- **Renewable technologies to replace fossil fuels**
- **Needs real, deep community discussion**

# Discussion

- This talk <http://alanbetts.com/talks>
- Rutland Herald articles at <http://alanbetts.com/writings>
- Interesting papers at <http://alanbetts.com/research>
  - *Vermont Climate Change Indicators*
  - *Seasonal Climate Transitions in New England*

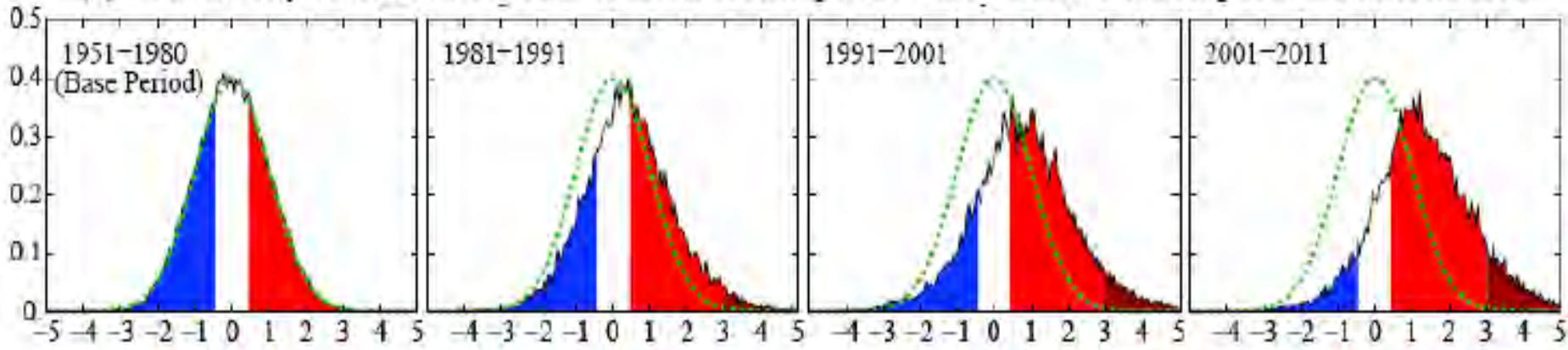


# Agricultural planning

- **Frozen ground and lakes: -7d/decade**
- **Earlier melt, earlier spring leaf-out: - 3d/decade**
- **Frost-free growing season: +4d/decade**
  - Greenhouse, row cover seasonal extenders
- **Winter extremes increasing with variable snow**
  - $T_{\min}$  extremes increasing +2-3°F/decade
- **More winter precipitation**
  - Wetter snow; more mixed phase; more frequent melt
- **Variable summer precipitation**
  - Heavier rain-rates, longer storms, longer droughts
  - Maximize soil water infiltration; water storage
  - Manage to reduce soil erosion
  - Design infrastructure to handle larger runoff
  - Increase soil organic matter

# Increasing Temperature Extremes is “Global Warming”

(a) Probability Distribution of Northern Hemisphere Land Summer Temperature Anomalies



(Hansen, 2012)

- Frequency of occurrence (vertical axis) of local June-July-August temperature anomalies for Northern Hemisphere land in units of local standard deviation (horizontal axis). The normal (gaussian) distribution bell curve is shown in green.
- **Large increase in anomalies  $> +3\sigma$  is global warming**
  - Increased from baseline 0.15% to 10% in 45 years

# What Do We Need To Do?

- **The transition to a sustainable society will take decades and a community effort**
- **Food:** local agriculture & gardens
- **Energy:** Double energy efficiency ....
  - home heating – district heating + cogen
  - renewable electricity mix
  - efficient transportation system
  - **careful forest management**
- **Finance:** relocalization in real world



# Sea-level Rise Will Eventually Flood Coastal Cities

- **Late 20<sup>th</sup>-century sea-level rise: 1 foot / century**
- **21<sup>st</sup> century: Likely to triple to 3 - 4 feet / century**
  - **And continue for centuries (accelerating for business as usual)**
- *<http://www.nature.com/news/us-northeast-coast-is-hotspot-for-rising-sea-levels-1.10880>*

# **‘Anti-global warming’ tactics**

## ***[delay, confuse and deny]***

- **Fabricate ‘data’ or cherry-pick the science for unsolved issues and ignore the big picture. ‘This disproves global warming’ or ‘Science isn’t resolved; we need more science.’**
- **Models can’t predict the future with certainty, so the models are ‘unreliable’, ‘can’t be trusted’. Given this uncertainty, *we cannot be held responsible for the future.***
- **If climate change were real, it would require collective government regulation of the ‘free market’, which we are opposed to; so *climate change must be a ‘hoax/conspiracy’***
- **It is too costly to make structural changes to our society, and it would affect profit margins.**
- **[We will wait till China and India take action]**
- **[The poor in Africa need energy]**

# But If Growth Can't Save Us, Surely Technology Can?

- We have lost sight of the **critical distinction** between the human-made world and the natural world
- We understand the human-made world, the world of computers & technology—because we made it—it is predictable and controllable, except when we are careless (& earthquakes)  
[E. F. Schumacher (1977). *A Guide for the Perplexed*]
- The same is not true of the natural world – which is far more complex and alive. Our understanding is limited; prediction & control are not possible

# But If Growth Can't Save Us, Surely Technology Can?

- Now our world of technology is having a global impact on the natural world and **it must be carefully managed** — because we are dependent on the natural world
  - **But this is incompatible with our ideology**

# Our Choices Are Bounded



- *Whether we use technical, social or religious language*
- **Humanity is an integral part of the earth system and dependent on its stability**
- **We do not have the freedom to do what we wish, whatever our economic or theological doctrine**
- **The response of the Earth system to our human-centered arrogance will be sufficiently large this century that we will rethink our doctrine**
- **We would be wise to rethink sooner rather than later**